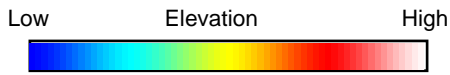
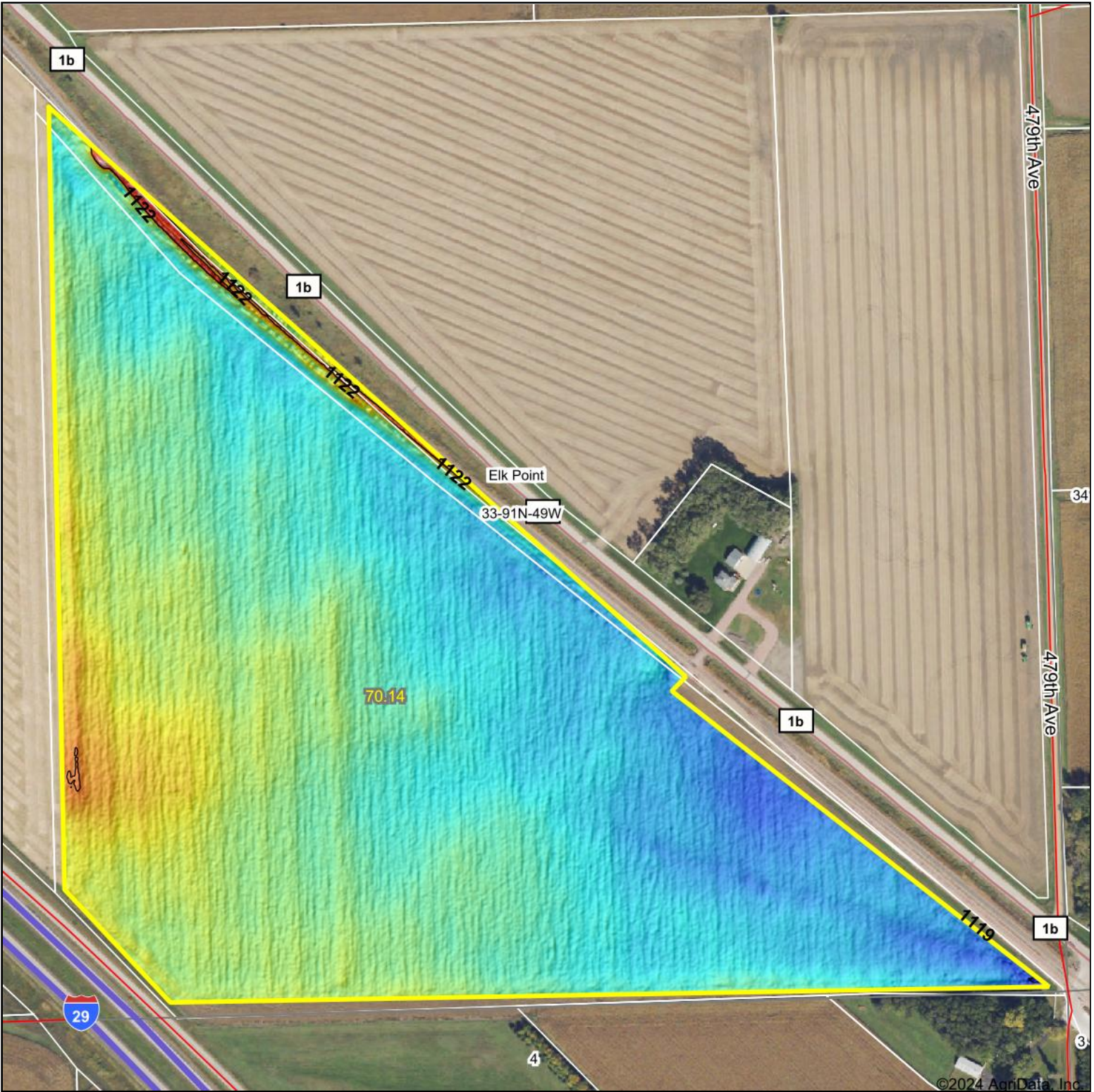


Topography Hillshade



Source: USGS 1 meter dem
 Interval(ft): 3
 Min: 1,118.9
 Max: 1,123.7
 Range: 4.8
 Average: 1,120.4
 Standard Deviation: 0.56 ft



33-91N-49W
Union County
South Dakota

Boundary Center: 42° 39' 10.29, -96° 37' 50.99



Maps Provided By:



© AgriData, Inc. 2023 www.AgriDataInc.com

Field borders provided by Farm Service Agency as of 5/21/2008