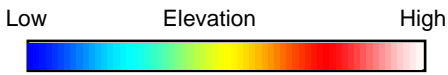
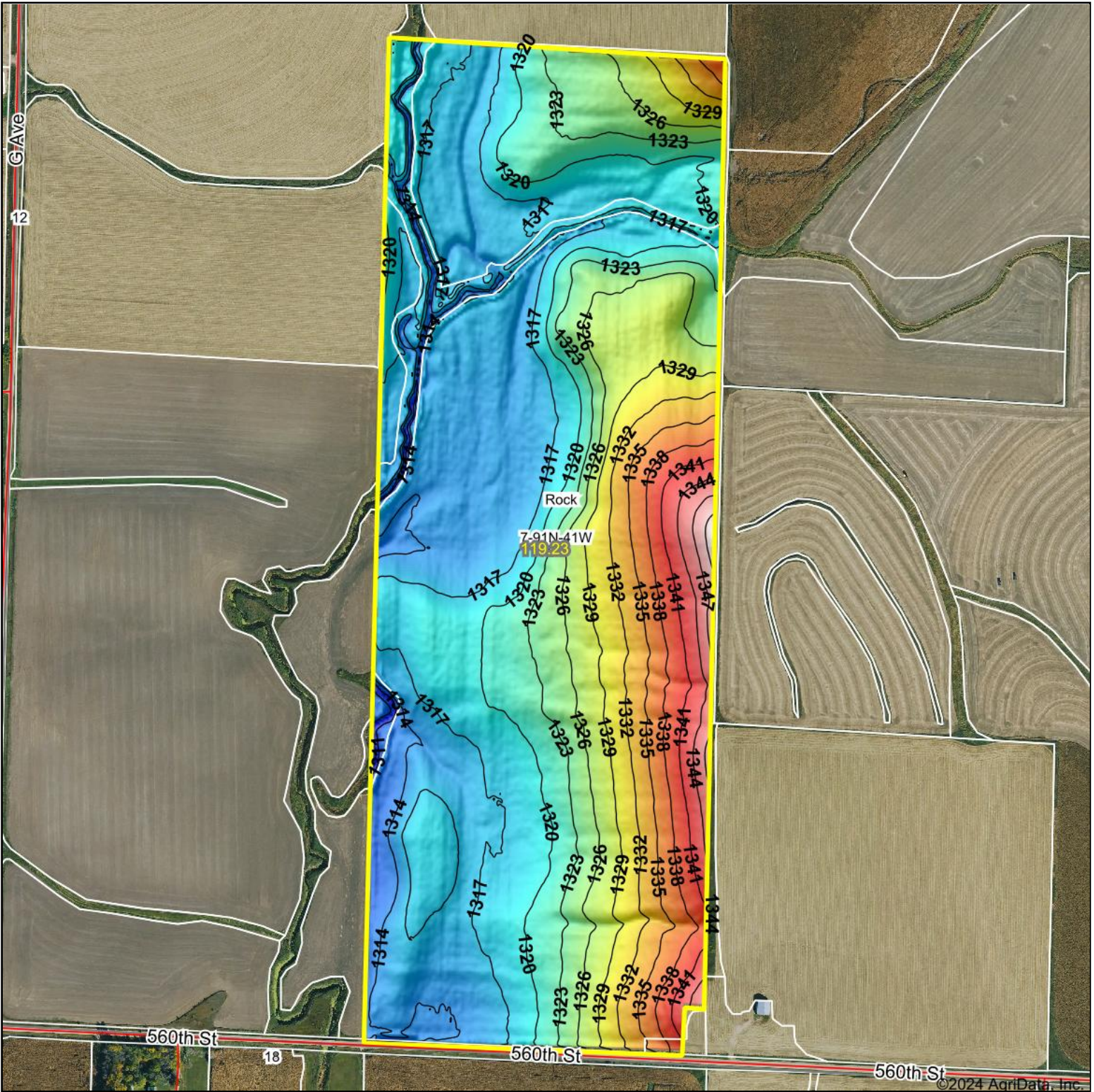


Topography Hillshade



Source: USGS 3 meter dem
 Interval(ft): 3
 Min: 1,306.6
 Max: 1,351.8
 Range: 45.2
 Average: 1,322.5
 Standard Deviation: 8.43 ft



7-91N-41W
Cherokee County
Iowa

Boundary Center: 42° 42' 42.55, -95° 44' 0.7



Maps Provided By:



© AgriData, Inc. 2023 www.AgriDataInc.com

Field borders provided by Farm Service Agency as of 5/21/2008

©2024 AgriData, Inc.