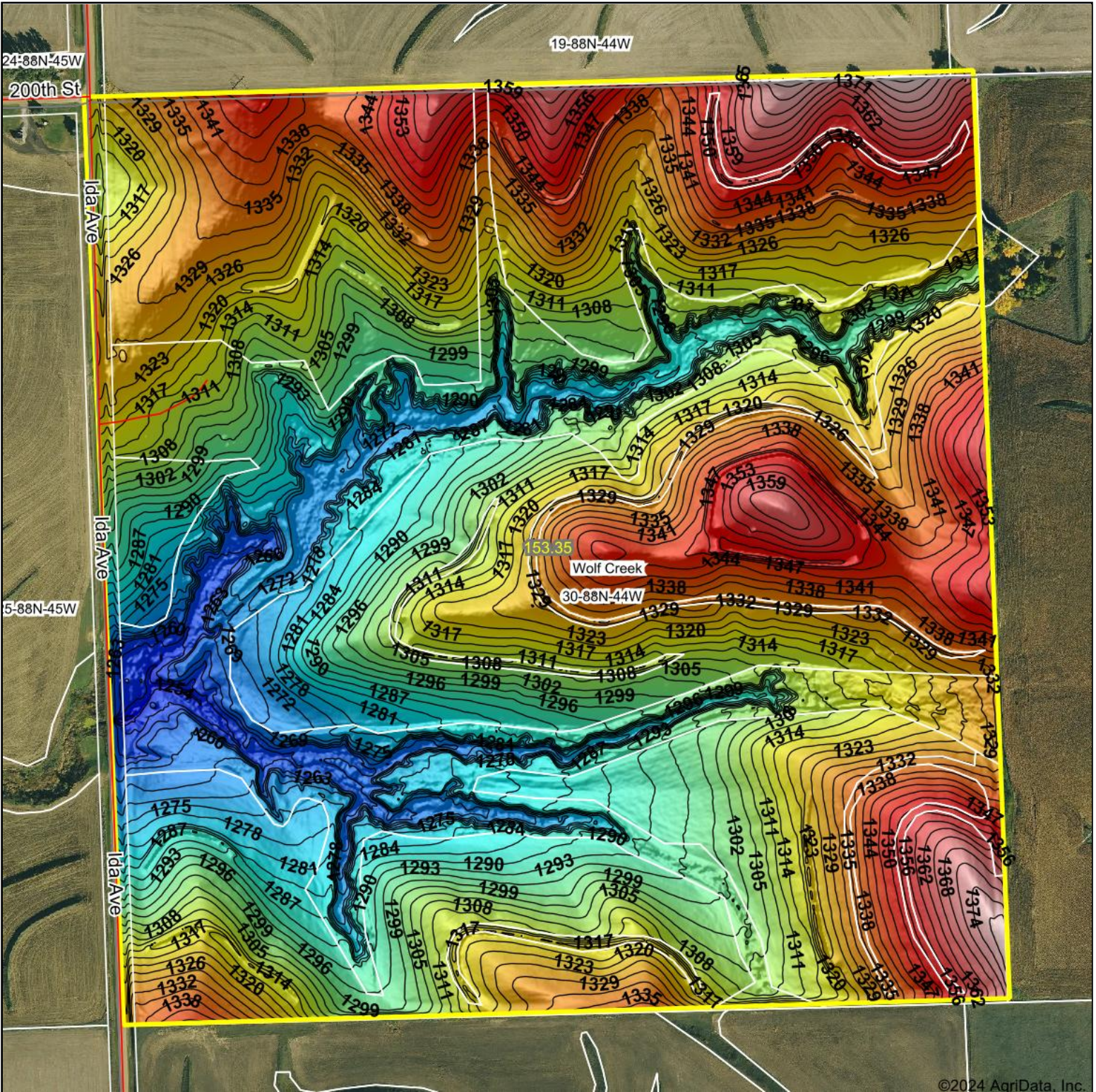
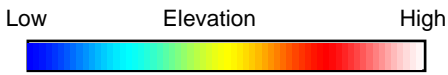


Topography Hillshade



©2024 AgriData, Inc.



Source: USGS 1 meter dem



Interval(ft): 3

Min: 1,250.5

Max: 1,383.9

Range: 133.4

Average: 1,314.1

Standard Deviation: 26.51 ft



9/20/2024

30-88N-44W
Woodbury County
Iowa

Boundary Center: 42° 24' 40.62, -96° 0' 51.54



Maps Provided By:



© AgriData, Inc. 2023 www.AgriDataInc.com

Field borders provided by Farm Service Agency as of 5/21/2008