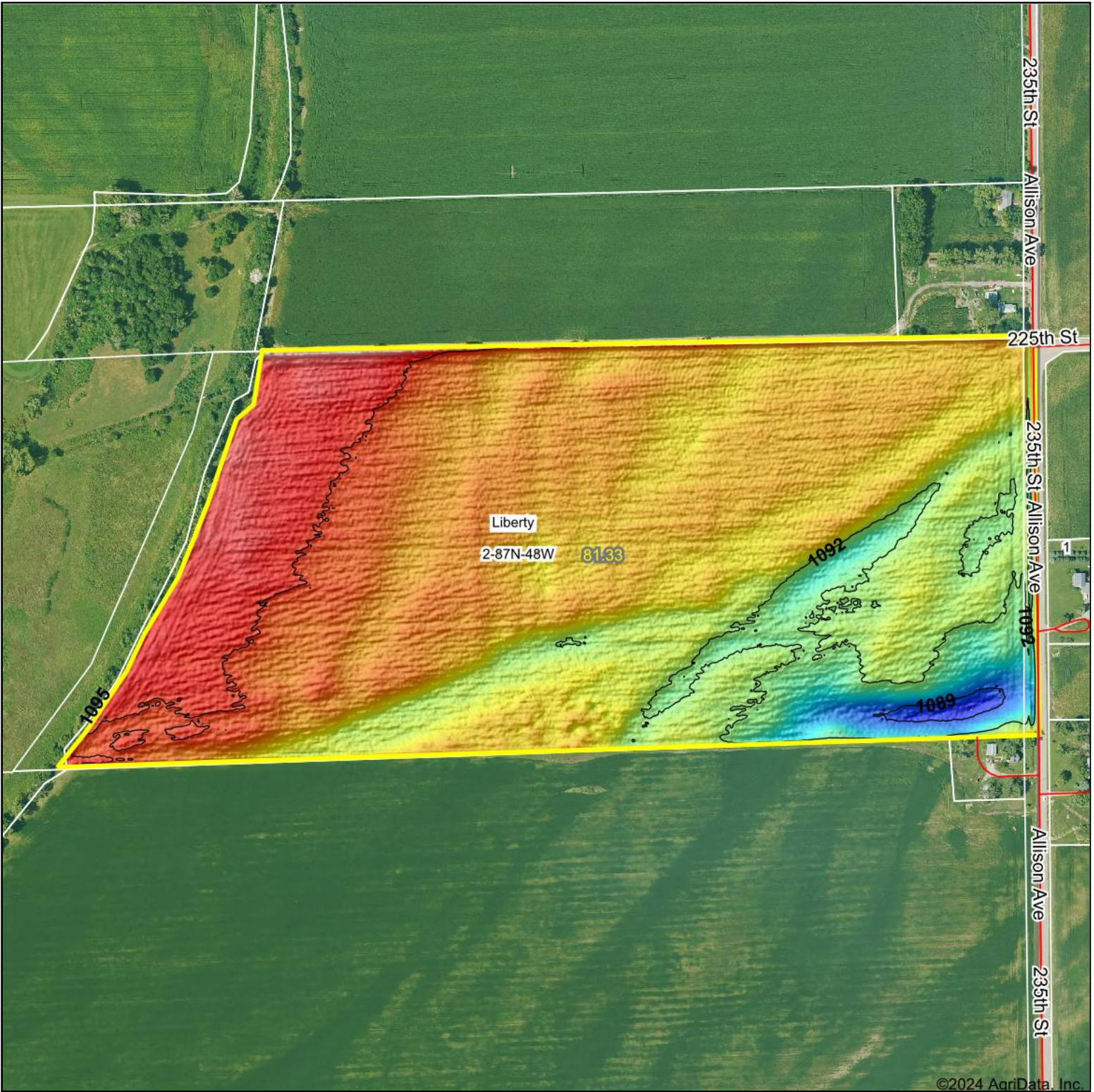
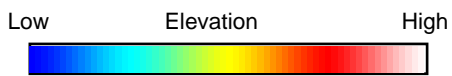


Topography Hillshade



©2024 AgriData, Inc.



Source: USGS 1 meter dem
 Interval(ft): 3
 Min: 1,088.3
 Max: 1,097.7
 Range: 9.4
 Average: 1,093.5
 Standard Deviation: 1.31 ft



11/25/2024

2-87N-48W
Woodbury County
Iowa

Boundary Center: 42° 22' 35.61, -96° 23' 43.43



Maps Provided By:



© AgriData, Inc. 2023 www.AgriDataInc.com

Field borders provided by Farm Service Agency as of 5/21/2008