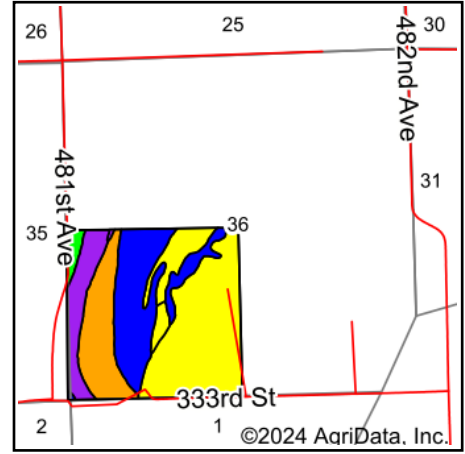
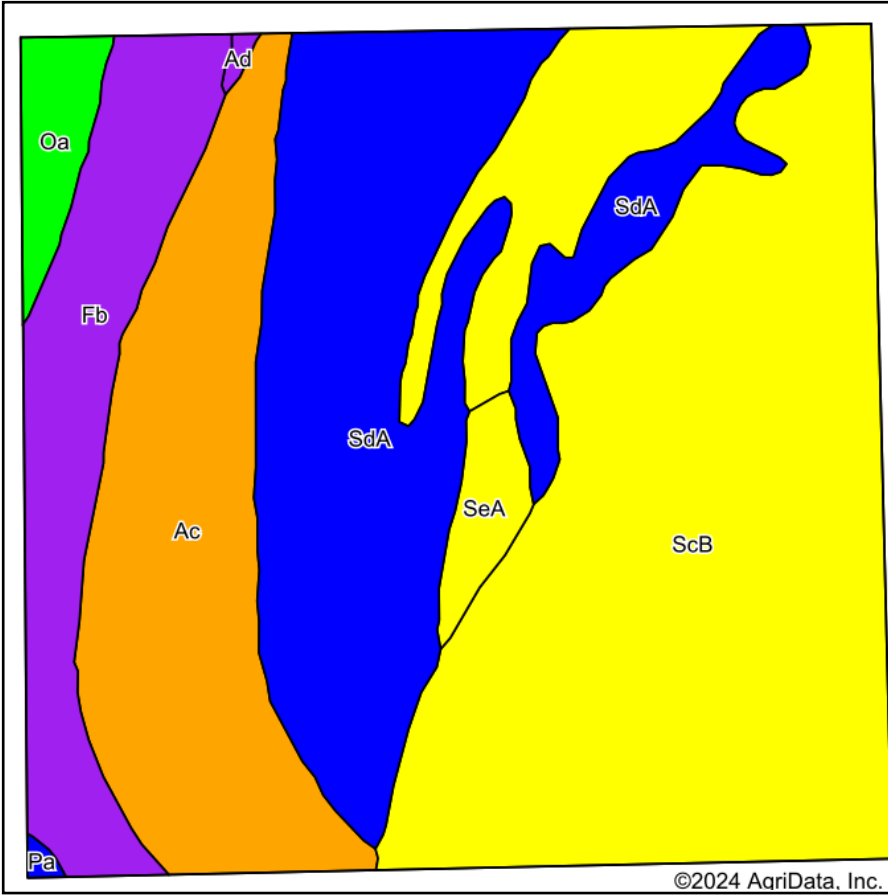


Soils Map



State: **South Dakota**
 County: **Union**
 Location: **36-90N-49W**
 Township: **Jefferson**
 Acres: **160**
 Date: **10/21/2024**



Maps Provided By:



© AgriData, Inc. 2023

www.AgriDataInc.com



Soils data provided by USDA and NRCS.

Area Symbol: SD127, Soil Area Version: 27

Code	Soil Description	Acres	Percent of field	Non-Irr Class Legend	Non-Irr Class *c	Productivity Index	Alfalfa hay Tons	Brome grass alfalfa AUM	Brome grass alfalfa hay Tons	Corn Bu	Corn Irrigated Bu	Kentucky bluegrass AUM	Oats Bu	Smooth brome grass AUM	Soyb Bu
ScB	Sardak loamy fine sand, 3 to 9 percent slopes	71.13	44.3%		IVs	27			1				28	2.5	
SdA	Scroll silty clay, 0 to 1 percent slopes	38.68	24.2%		IIIs	54	2.8	4.7		70			40		
Ac	Albaton silty clay	27.13	17.0%		IIIW	55		5	3	100	137	2.5	55	4.1	
Fb	Norway loamy sand	16.30	10.2%		VIW	30	1.4			30			20		
Oa	Omadi silt loam	3.44	2.2%		IW	98	4.4	7.3		105			84		
SeA	Sardak soils, 0 to 3 percent slopes	2.85	1.8%		IVs	31	0.9			35			25	1.8	
Ad	Albaton silty clay, depressional	0.24	0.2%		VW	29									
Pa	Percival silty clay	0.23	0.1%		IIIs	73	3.2	6		80			55		
Weighted Average						3.48	40.2	0.9	2.1	1	39.9	23.2	0.4	35.8	1.8

*n: The aggregation method is "Weighted Average using all components"

*c: Using Capabilities Class Dominant Condition Aggregation Method

Soils data provided by USDA and NRCS.