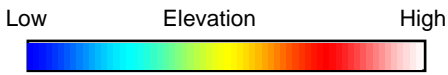
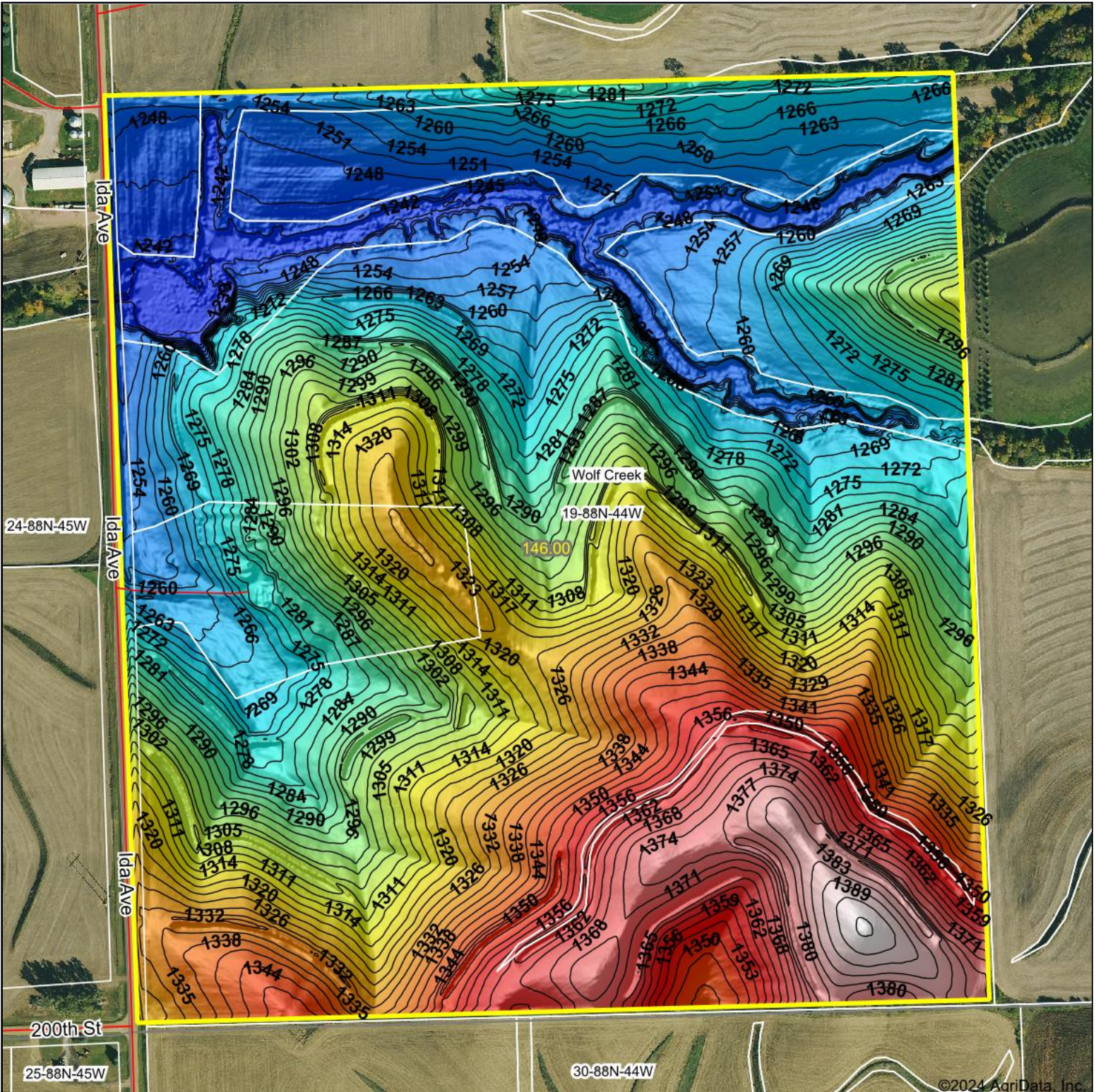


# Topography Hillshade



Source: USGS 1 meter dem  
 Interval(ft): 3  
 Min: 1,233.4  
 Max: 1,395.4  
 Range: 162.0  
 Average: 1,298.8  
 Standard Deviation: 39.73 ft



**19-88N-44W**  
**Woodbury County**  
**Iowa**

Boundary Center: 42° 25' 6.75, -96° 0' 51.93



Maps Provided By:



© AgriData, Inc. 2023 www.AgriDataInc.com

Field borders provided by Farm Service Agency as of 5/21/2008