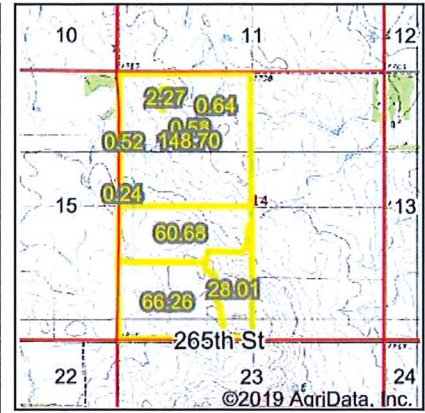
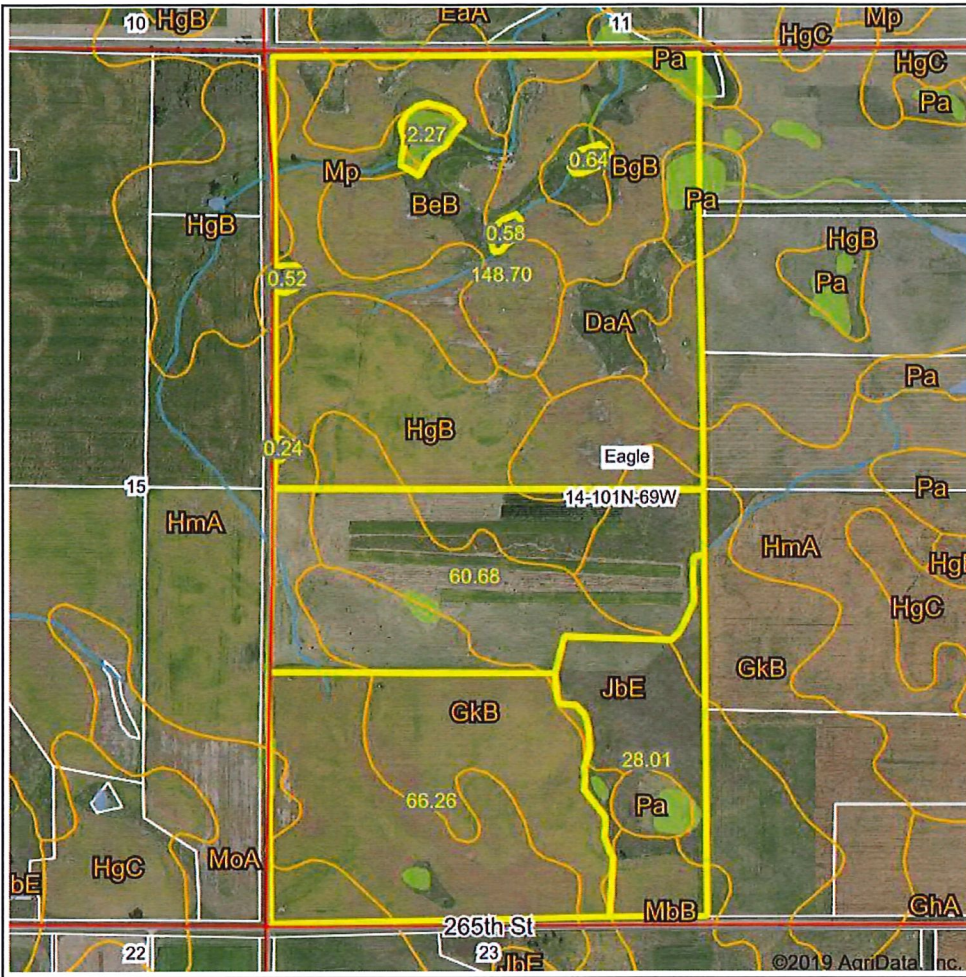


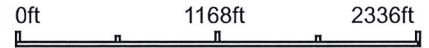
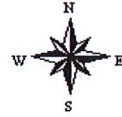
Wetlands Map



State: **South Dakota**
 Location: **14-101N-69W**
 County: **Brule**
 Township: **Eagle**
 Date: **12/26/2019**



Maps Provided By:



Classification Code	Type	Acres
PEM1C	Freshwater Emergent Wetland	3.45
R4SBC	Riverine	2.21
PEM1/ABFh	Freshwater Emergent Wetland	1.52
PEM1Cd	Freshwater Emergent Wetland	1.31
PEM1Ad	Freshwater Emergent Wetland	0.66
PEM1Cx	Freshwater Emergent Wetland	0.61
PABFx	Freshwater Pond	0.26
R5UBH	Riverine	0.00
Total Acres		10.02

Data Source: National Wetlands Inventory website. U.S. DoI, Fish and Wildlife Service, Washington, D.C. <http://www.fws.gov/wetlands/>

Field borders provided by Farm Service Agency as of 5/21/2008.