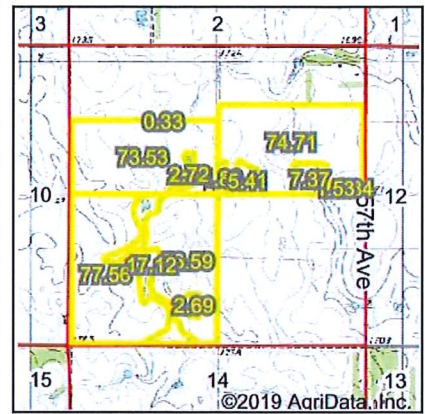
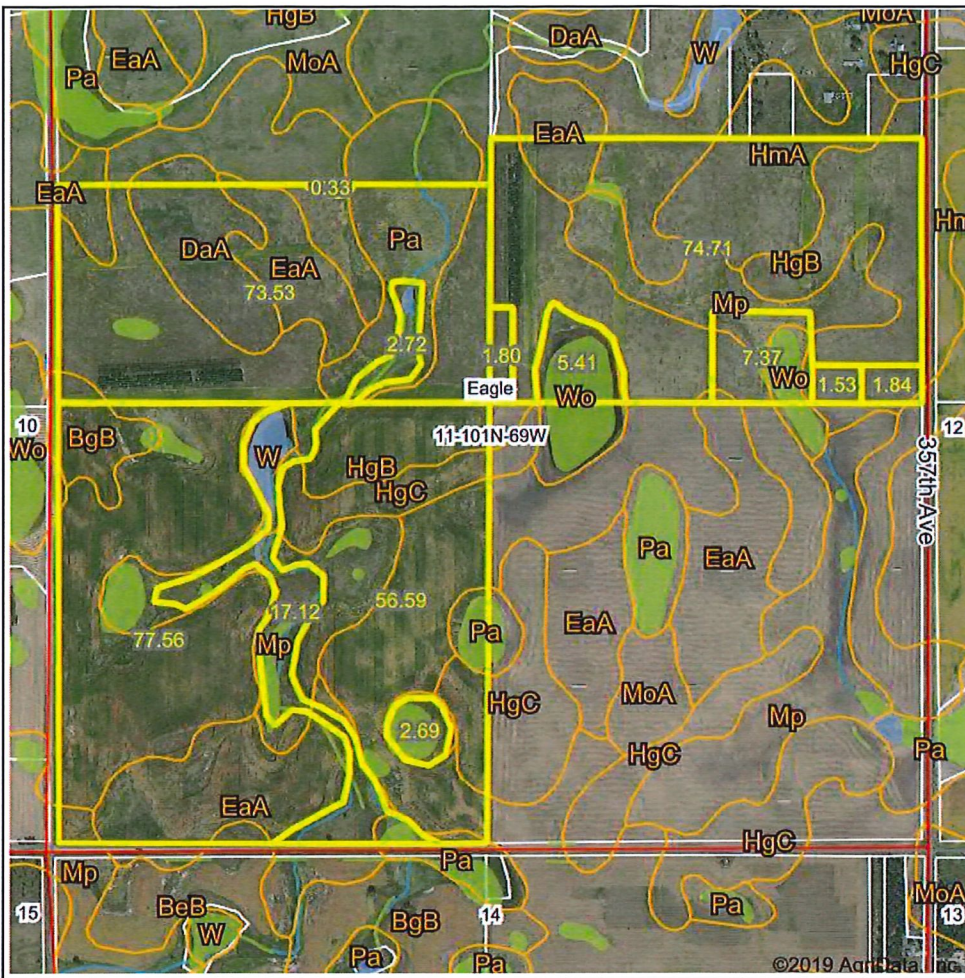


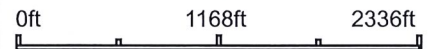
Wetlands Map



State: **South Dakota**
 Location: **11-101N-69W**
 County: **Brule**
 Township: **Eagle**
 Date: **12/26/2019**



Maps Provided By



Classification Code	Type	Acres
PEM1C	Freshwater Emergent Wetland	11.25
PEM1A	Freshwater Emergent Wetland	2.66
PABFh	Freshwater Pond	2.32
PEM1Ad	Freshwater Emergent Wetland	1.95
R4SBC	Riverine	1.62
PEM1Cx	Freshwater Emergent Wetland	0.33
PABFx	Freshwater Pond	0.20
R5UBH	Riverine	0.09
Total Acres		20.42

Data Source: National Wetlands Inventory website. U.S. DoI, Fish and Wildlife Service, Washington, D.C. <http://www.fws.gov/wetlands/>

Field borders provided by Farm Service Agency as of 5/21/2008.