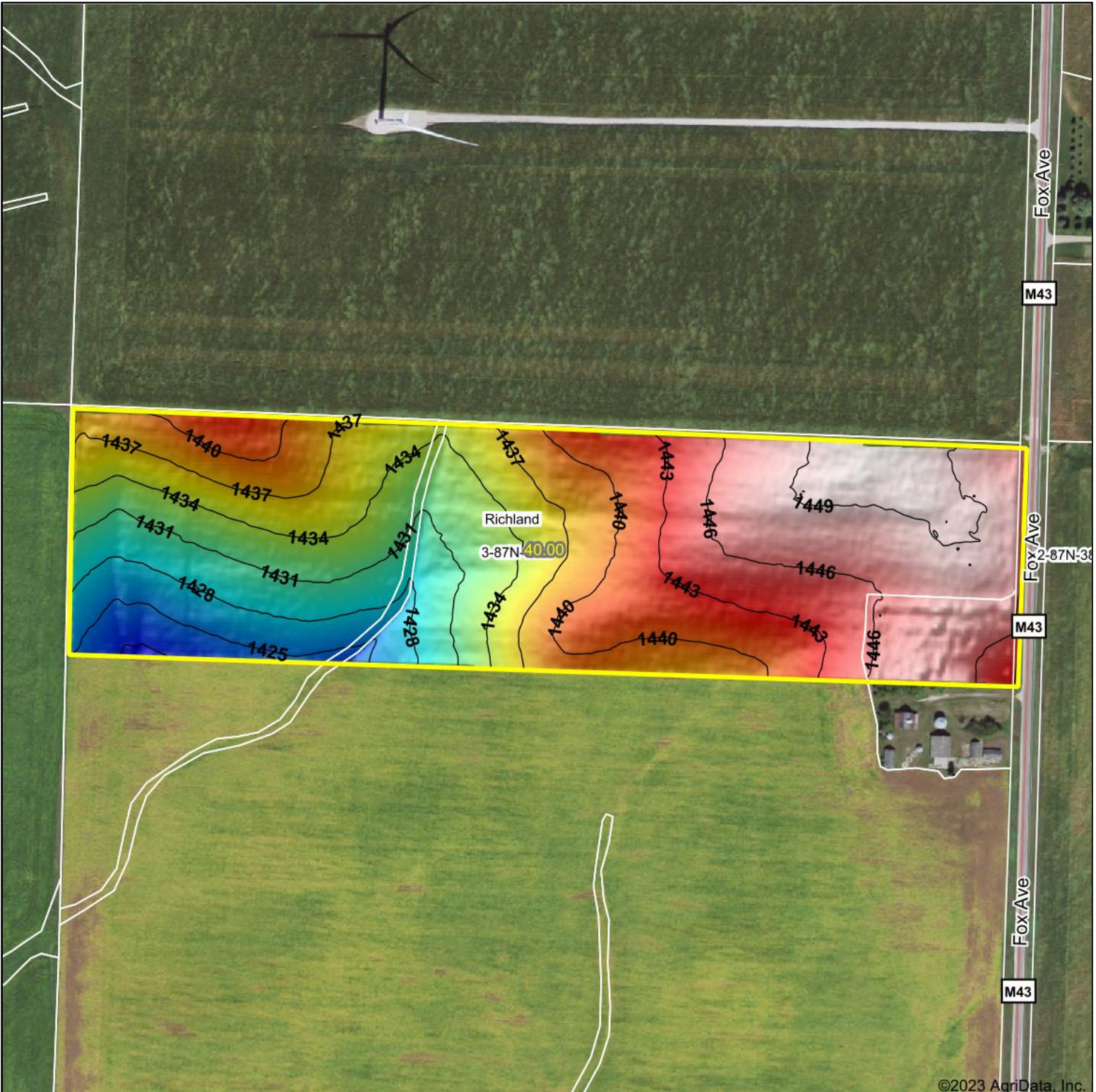
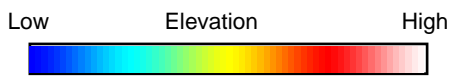


# Topography Hillshade



©2023 AgriData, Inc.



Source: USGS 3 meter dem  
 Interval(ft): 3  
 Min: 1,421.1  
 Max: 1,450.1  
 Range: 29.0  
 Average: 1,438.4  
 Standard Deviation: 7.51 ft



2/13/2023

**3-87N-38W**  
**Sac County**  
**Iowa**

map center: 42° 22' 34.07, -95° 14' 50.38



Maps Provided By:



© AgriData, Inc. 2021 www.AgriDataInc.com

Field borders provided by Farm Service Agency as of 5/21/2008