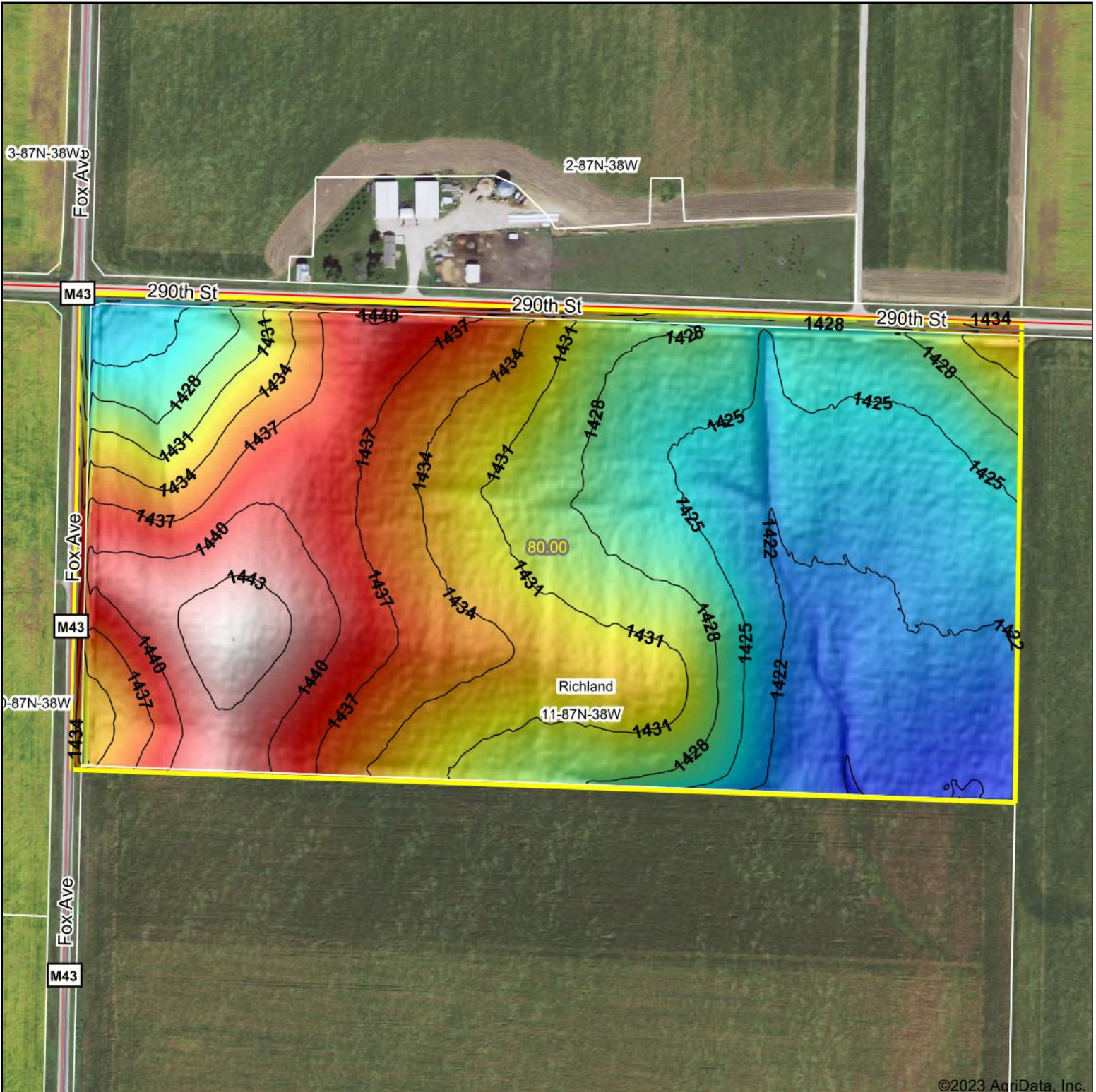
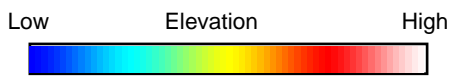


Topography Hillshade



©2023 AgriData, Inc.



Source: USGS 3 meter dem
 Interval(ft): 3
 Min: 1,418.2
 Max: 1,445.0
 Range: 26.8
 Average: 1,430.4
 Standard Deviation: 6.59 ft



2/13/2023

11-87N-38W
Sac County
Iowa

map center: 42° 22' 8.84, -95° 14' 32.33



Maps Provided By:



© AgriData, Inc. 2021 www.AgriDataInc.com

Field borders provided by Farm Service Agency as of 5/21/2008