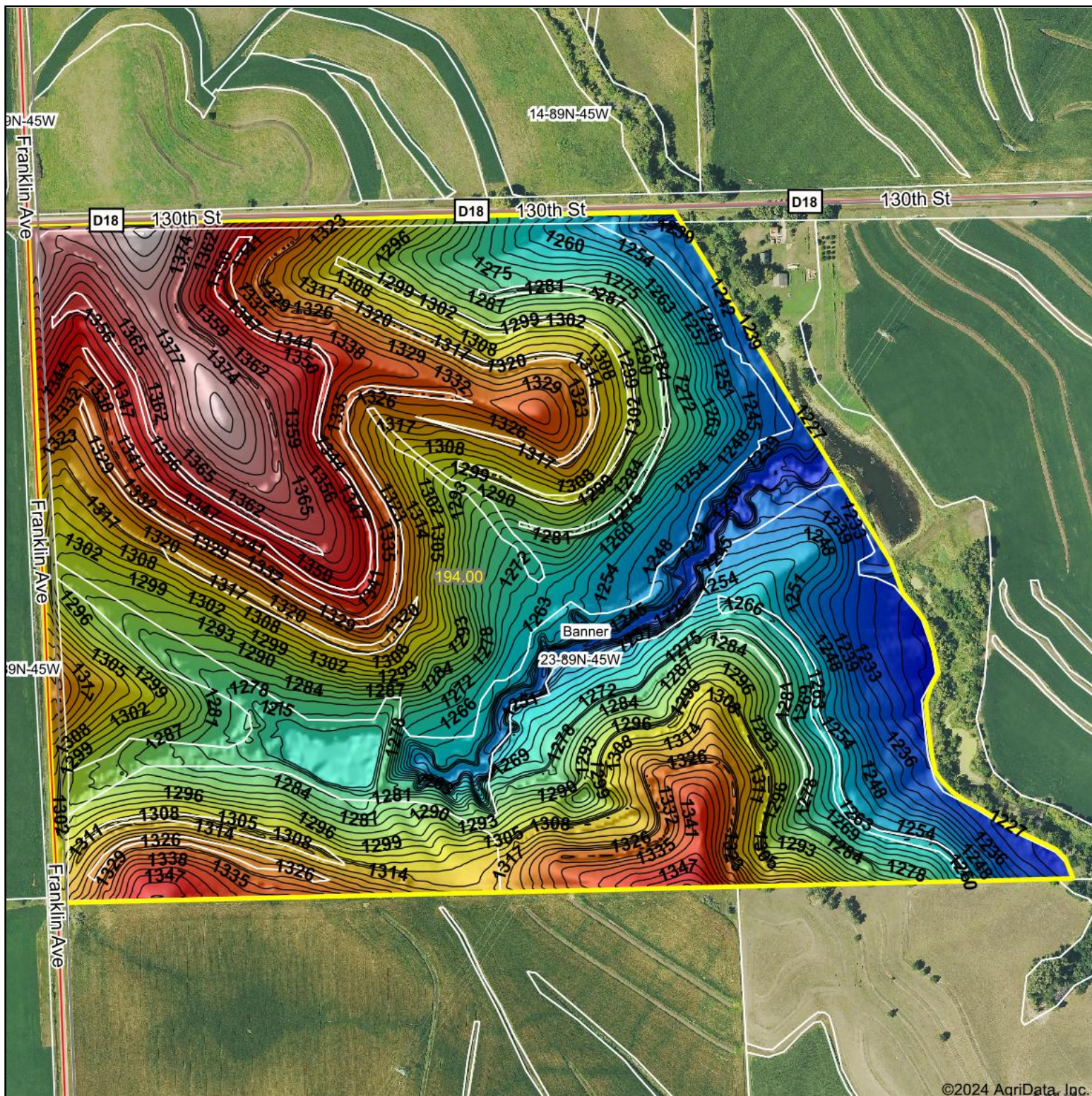
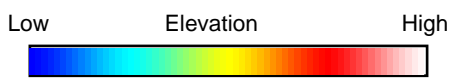


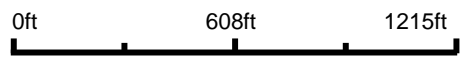
Topography Hillshade



©2024 AgriData, Inc.



Source: USGS 3 meter dem
 Interval(ft): 3
 Min: 1,219.0
 Max: 1,391.5
 Range: 172.5
 Average: 1,299.0
 Standard Deviation: 38.42 ft



23-89N-45W
Woodbury County
Iowa

Boundary Center: 42° 30' 53.49, -96° 7' 40.06



Maps Provided By:



© AgriData, Inc. 2023 www.AgriDataInc.com

Field borders provided by Farm Service Agency as of 5/21/2008