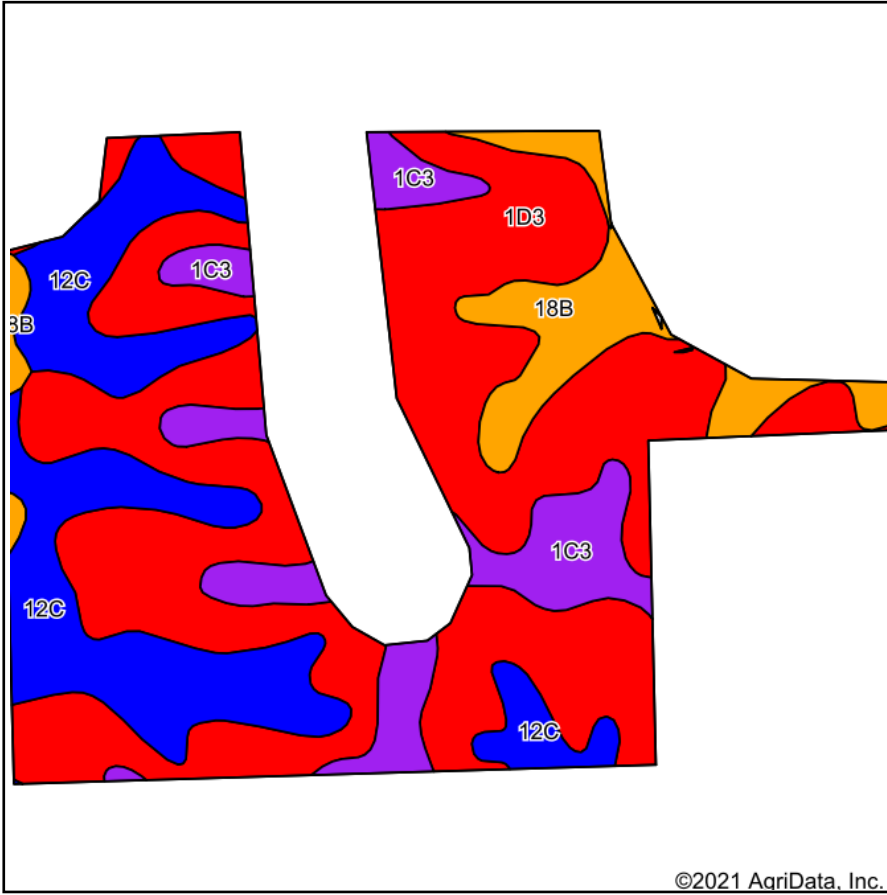
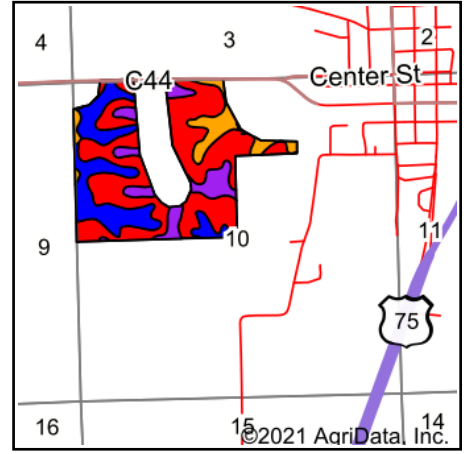


Soils Map



Soils data provided by USDA and NRCS.



State: **Iowa**
 County: **Plymouth**
 Location: **10-91N-46W**
 Township: **Plymouth**
 Acres: **135**
 Date: **4/8/2021**



Maps Provided By:



© AgriData, Inc. 2021

www.AgriDataInc.com



Area Symbol: IA149, Soil Area Version: 31

Code	Soil Description	Acres	Percent of field	CSR2 Legend	Non-Irr Class *c	CSR2**	CSR	*n NCCPI Soybeans
1D3	Ida silt loam, 9 to 14 percent slopes, severely eroded	76.23	56.5%		IIIe	32	35	61
12C	Napier silt loam, 5 to 9 percent slopes	30.84	22.8%		IIIe	89	55	87
1C3	Ida silt loam, 5 to 9 percent slopes, severely eroded	15.59	11.5%		IIIe	58	44	63
18B	McPaul-Kennebec silt loams, 2 to 5 percent slopes	12.34	9.1%		Ile	75	70	80
Weighted Average						52	43.8	*n 68.9

**IA has updated the CSR values for each county to CSR2.

*n: The aggregation method is "Weighted Average using all components"

*c: Using Capabilities Class Dominant Condition Aggregation Method

Soils data provided by USDA and NRCS.