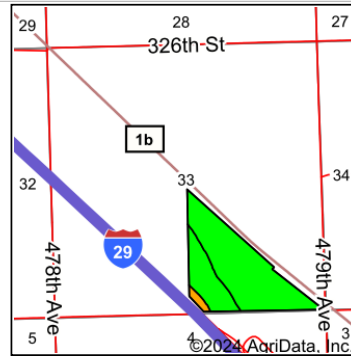
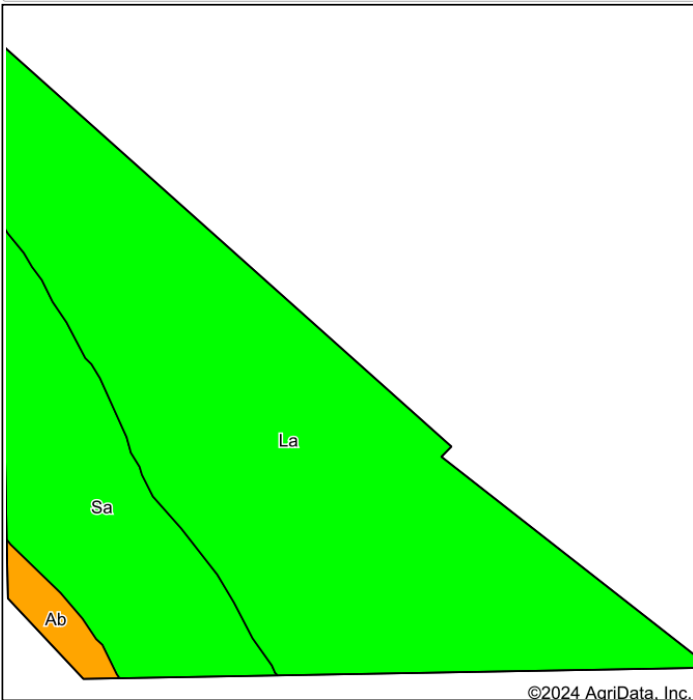


Soils Map



State: **South Dakota**
 County: **Union**
 Location: **33-91N-49W**
 Township: **Elk Point**
 Acres: **70.14**
 Date: **9/19/2024**



Soils data provided by USDA and NRCS.

©2024 AgriData, Inc.

Area Symbol: SD127, Soil Area Version: 27

Code	Soil Description	Acres	Percent of field	Non-Irr Class Legend	Non-Irr Class *c	Irr Class *c	Productivity Index	Bromegrass alfalfa AUM	Bromegrass alfalfa hay Tons	Corn Bu	Corn Irrigated Bu	Kentucky bluegrass AUM	Oats Bu	Smooth bromegrass AUM	Soybeans Bu	Soybeans Irrigated Bu	*n NCCPI Soybeans
La	Lakeport silty clay loam	51.42	73.3%	■	Iw		97	9.2	5.5	138		3.4	76	5.7	46		59
Sa	Salix silty clay loam	16.89	24.1%	■	Iw	I	98	5		112	150				40	50	80
Ab	Albaton silt loam, overwash	1.83	2.6%	■	IIIw		59	5.3	3.2	105		2.6	58	4.3	35		46
Weighted Average					1.05	*	96.2	8.1	4.1	130.9	36.1	2.6	57.2	4.3	44.3	12	*n 63.7

*n: The aggregation method is "Weighted Average using all components"

*c: Using Capabilities Class Dominant Condition Aggregation Method

*- Irr Class weighted average cannot be calculated on the current soils data due to missing data.

Soils data provided by USDA and NRCS.