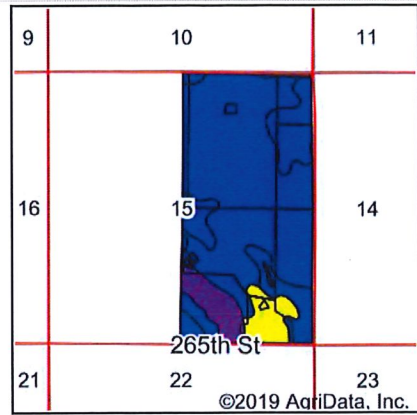
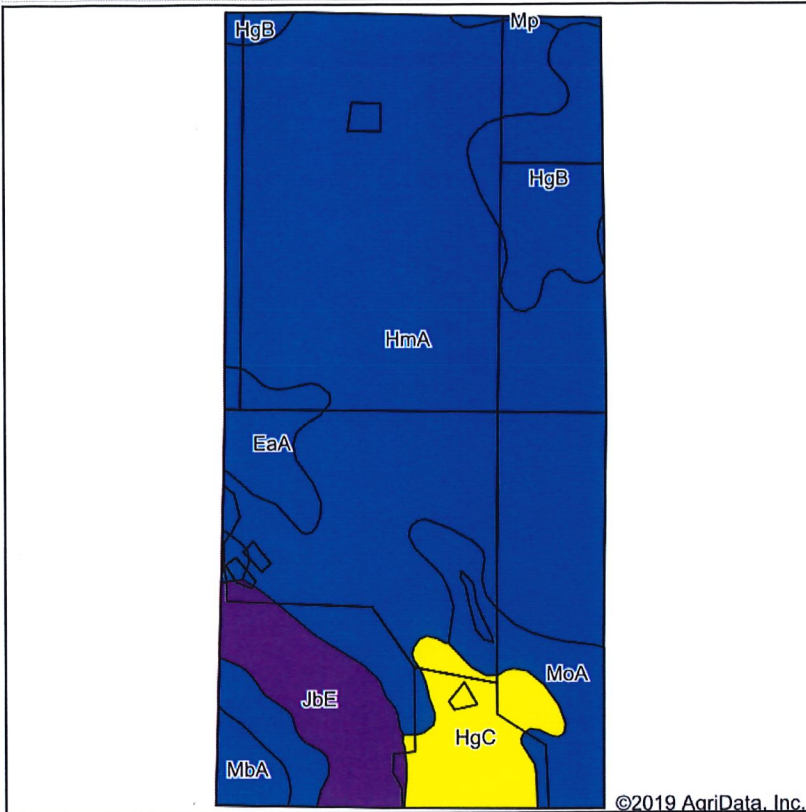


Soils Map



State: **South Dakota**
 County: **Brule**
 Location: **15-101N-69W**
 Township: **Eagle**
 Acres: **298.97**
 Date: **12/26/2019**



Maps Provided By: **surety**
 CUSTOMIZED ONLINE MAPPING
 © AgriData, Inc. 2019 www.AgriDataInc.com



Soils data provided by USDA and NRCS.

Area Symbol: SD603, Soil Area Version: 23

Code	Soil Description	Acres	Percent of field	Non-Irr Class Legend	Non-Irr Class *c	Irr Class *c	Productivity Index	Alfalfa hay	Brome grass alfalfa	Corn	Grain sorghum	Oats	Spring wheat	Winter wheat	*n NCCPI Soybeans
HmA	Highmore-Mobridge silt loams, 0 to 4 percent slopes	192.09	64.3%		IIc		87	2	3.3	51	55	61	25	35	62
MoA	Mobridge silt loam, 0 to 2 percent slopes	25.06	8.4%		IIc		94								62
HgB	Highmore-Java complex, 1 to 5 percent slopes	24.97	8.4%		IIe		76	2.7	4.5	53	57	61		33	54
JbE	Java-Betts loams, 9 to 20 percent slopes	20.79	7.0%		VIe		17								42
HgC	Highmore-Java complex, 5 to 9 percent slopes	18.26	6.1%		IVe		64	2.3	3.8	44	49	56		28	53
EaA	Eakin-DeGrey silt loams, 0 to 2 percent slopes	10.61	3.5%		IIc		70								54



Soils data provided by USDA and NRCS.

Maps Provided By:



© AgriData, Inc. 2019

www.AgriDataInc.com

Code	Soil Description	Acres	Percent of field	Non-Irr Class Legend	Non-Irr Class *c	Irr Class *c	Productivity Index	Alfalfa hay	Bromegrass alfalfa	Corn	Grain sorghum	Oats	Spring wheat	Winter wheat	*n NCCPI Soybeans
MbA	Millboro silt loam, 0 to 3 percent slopes	5.94	2.0%		Ils	Ils	87								41
Mp	Mobridge-Plankinton silt loams	1.25	0.4%		Ilc		86	3	5	64	70	70	33	45	45
Weighted Average							79.8	1.7	2.7	40.1	43.4	48	16.2	27.1	*n 58.6

*n: The aggregation method is "Weighted Average using major components"

*c: Using Capabilities Class Dominant Condition Aggregation Method