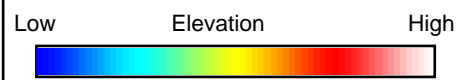
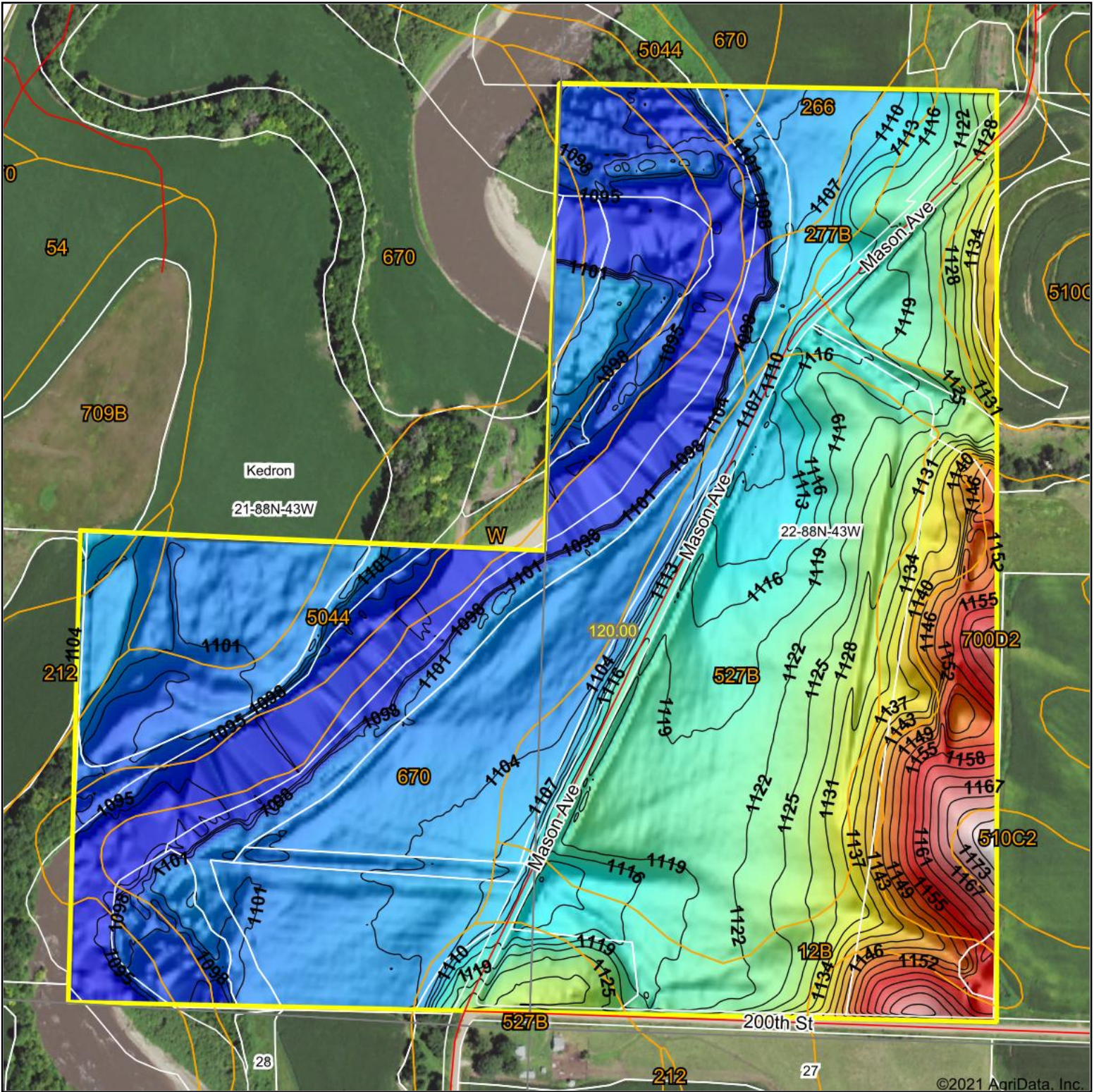
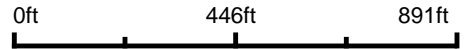


Topography Hillshade



Source: USGS 3 meter dem
 Interval(ft): 3
 Min: 1,090.8
 Max: 1,178.4
 Range: 87.6
 Average: 1,112.6
 Standard Deviation: 17.52 ft



21-88N-43W
 Woodbury County
 Iowa

map center: 42° 25' 15.08, -95° 50' 44.03



© AgriData, Inc. 2021 www.AgriDataInc.com

Field borders provided by Farm Service Agency as of 5/21/2008.

©2021 AgriData, Inc.