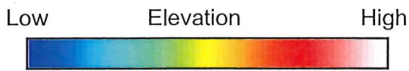
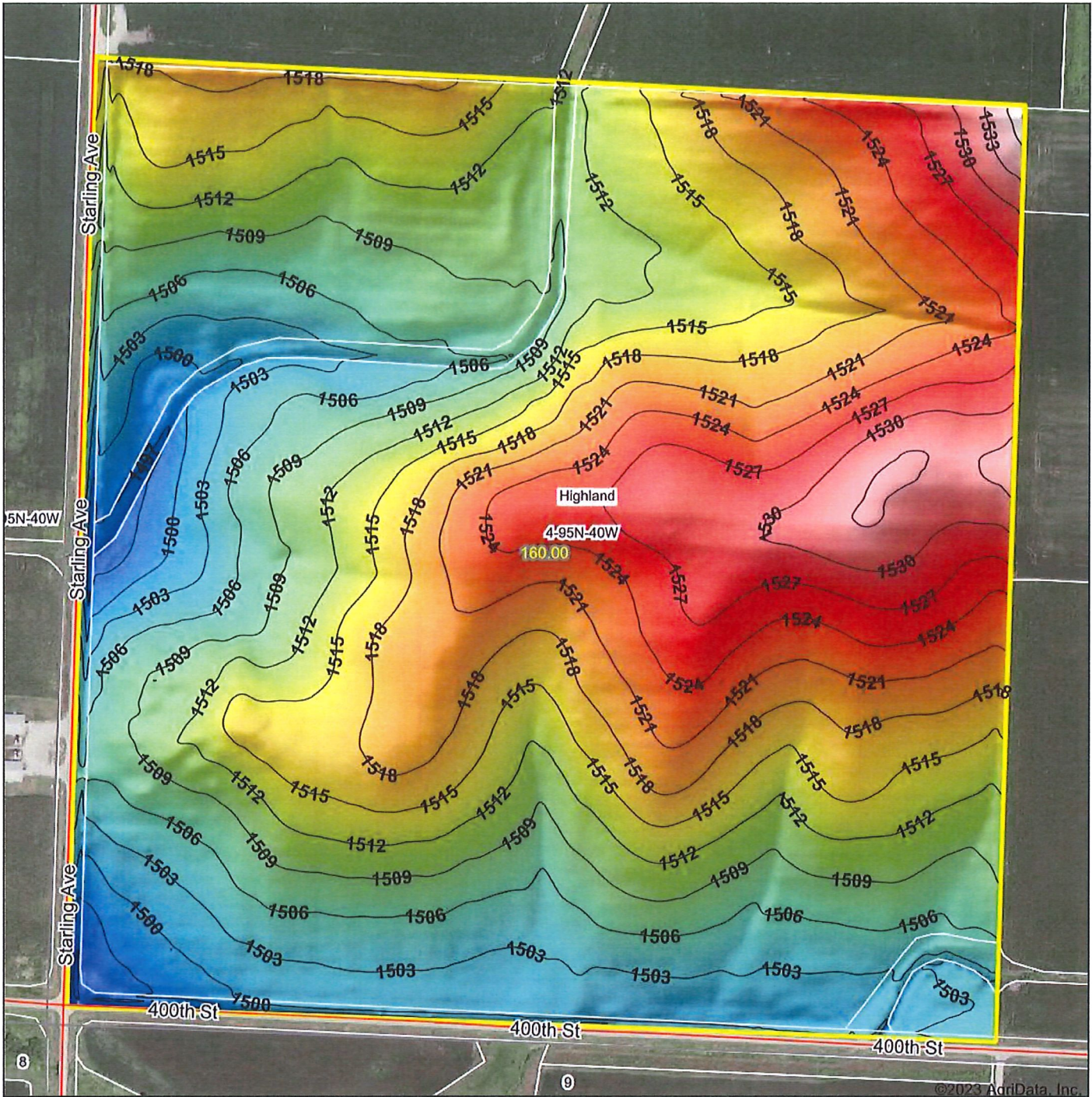
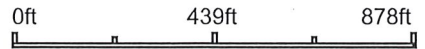


# Topography Hillshade



Source: USGS 3 meter dem  
 Interval(ft): 3  
 Min: 1,492.5  
 Max: 1,537.8  
 Range: 45.3  
 Average: 1,513.8  
 Standard Deviation: 8.69 ft



4-95N-40W  
 O'Brien County  
 Iowa

Boundary Center: 43° 4' 23.03, -95° 34' 46.86



Maps Provided By:



© AgriData, Inc. 2023 www.AgriDataInc.com

Field borders provided by Farm Service Agency as of 5/21/2008.

©2023 AgriData, Inc.