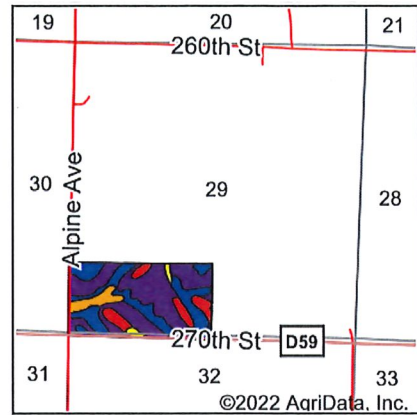
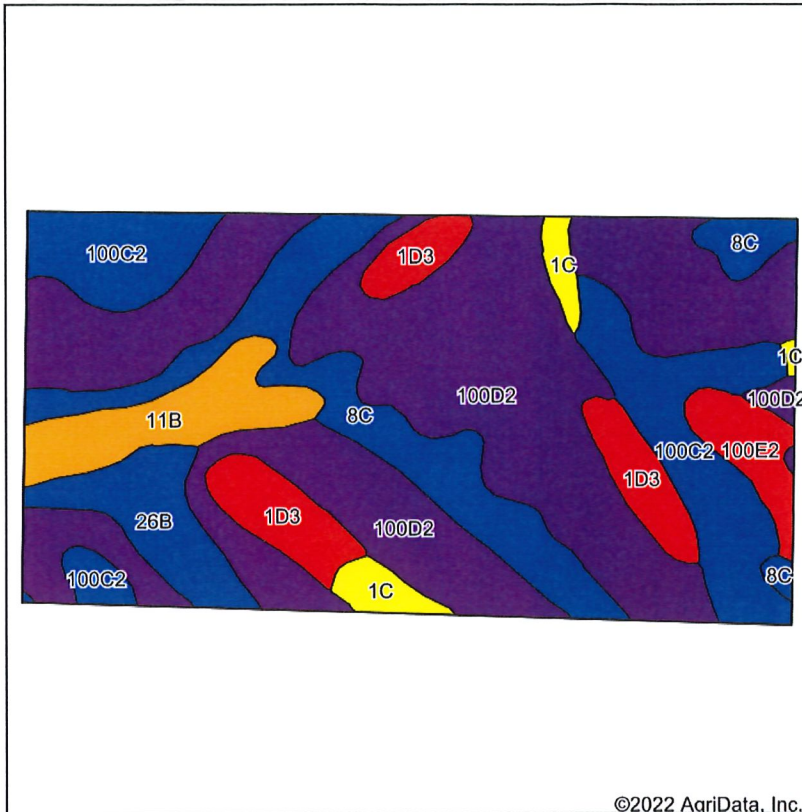


Soils Map



State: **Iowa**
 County: **Ida**
 Location: **29-87N-41W**
 Township: **Maple**
 Acres: **80**
 Date: **8/1/2022**



Maps Provided By:



Soils data provided by USDA and NRCS.

Area Symbol: IA093, Soil Area Version: 32									
Code	Soil Description	Acres	Percent of field	CSR2 Legend	Non-Irr Class *c	CSR2**	CSR	*n NCCPI Soybeans	
100D2	Monona silty clay loam, 9 to 14 percent slopes, eroded	38.87	48.6%		IIIe	60	47	69	
100C2	Monona silty clay loam, 5 to 9 percent slopes, eroded	11.68	14.6%		IIIe	85	56	74	
8C	Judson silty clay loam, deep loess, 5 to 9 percent slopes	10.74	13.4%		IIIe	87	61	78	
1D3	Ida silt loam, 9 to 14 percent slopes, severely eroded	6.02	7.5%		IIIe	32	37	61	
11B	Colo-Judson silty clay loams, 0 to 5 percent slopes, occasionally flooded	4.61	5.8%		IIw	80	62	81	
26B	Kennebec silty clay loam, 2 to 5 percent slopes, occasionally flooded	4.00	5.0%		Ile	88	73	78	
100E2	Monona silty clay loam, 14 to 20 percent slopes, eroded	2.23	2.8%		IVe	46	38	64	
1C	Ida silt loam, 5 to 9 percent slopes	1.85	2.3%		IIIe	65	51	85	
Weighted Average						2.92	67.4	51.4	*n 71.7

**IA has updated the CSR values for each county to CSR2.

*n: The aggregation method is "Weighted Average using all components"

*c: Using Capabilities Class Dominant Condition Aggregation Method

Soils data provided by USDA and NRCS.