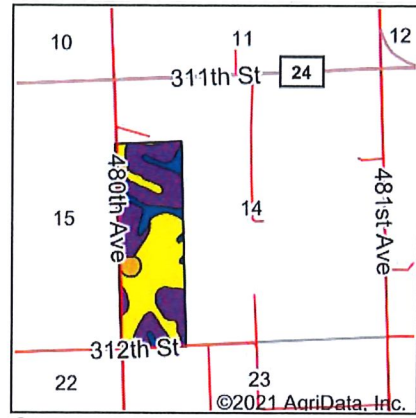
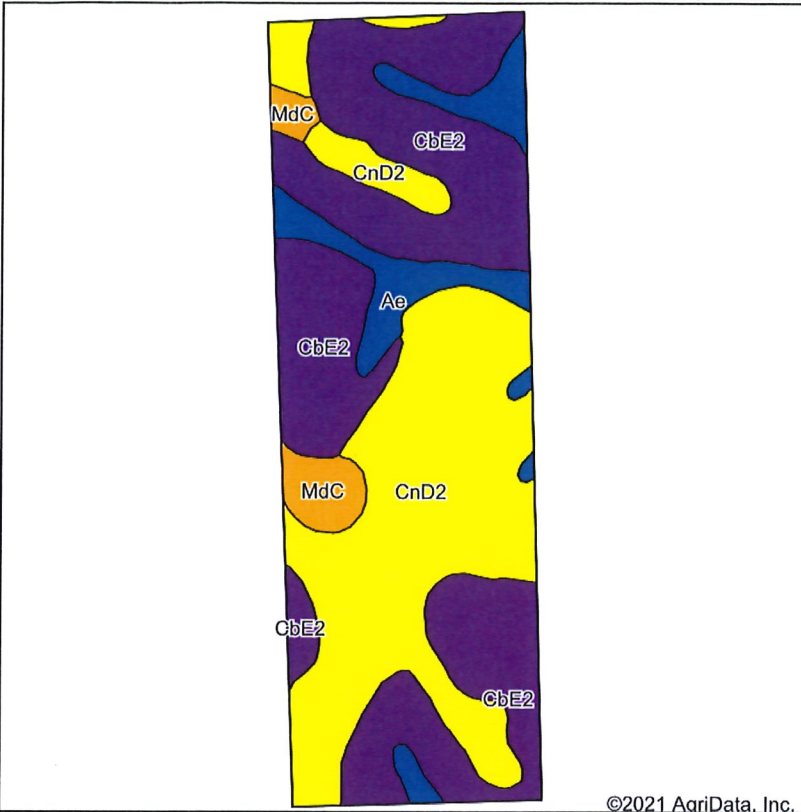


Soils Map



State: **South Dakota**
 County: **Union**
 Location: **14-93N-49W**
 Township: **Sioux Valley**
 Acres: **120**
 Date: **8/26/2021**



Maps Provided By:



© AgriData, Inc. 2021 www.AgriDataInc.com

Area Symbol: SD127, Soil Area Version: 24

Code	Soil Description	Acres	Percent of field	Non-Irr Class Legend	Non-Irr Class *c	Irr Class *c	Productivity Index	Alfalfa hay	Bromegrass alfalfa	Corn	Corn Irrigated	Grain sorghum	Oats	Soybeans	*n NCCPI Soybeans
CbE2	Crofton silt loam, 12 to 20 percent slopes, eroded	54.15	45.1%		Vle		41								63
CnD2	Crofton-Nora complex, 6 to 11 percent slopes, eroded	49.98	41.6%		Ive	Ive	47								66
Ae	Alcester silty clay loam, 2 to 6 percent slopes	11.32	9.4%		Ile	IIle	90								72
MdC	Moody-Nora silty clay loams, 6 to 10 percent slopes	4.55	3.8%		IIle	Ive	70	3.6	6	71	120	66	67	24	64
Weighted Average							49.2	0.1	0.2	2.7	4.6	2.5	2.5	0.9	*n 65.1

*n: The aggregation method is "Weighted Average using all components"
 *c: Using Capabilities Class Dominant Condition Aggregation Method

Soils data provided by USDA and NRCS.