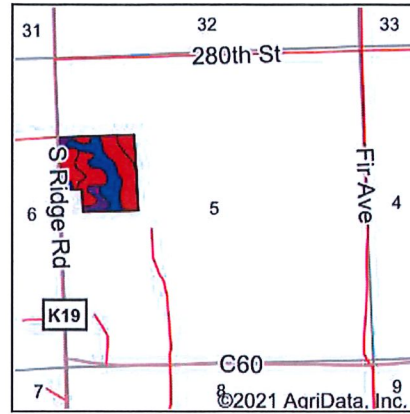
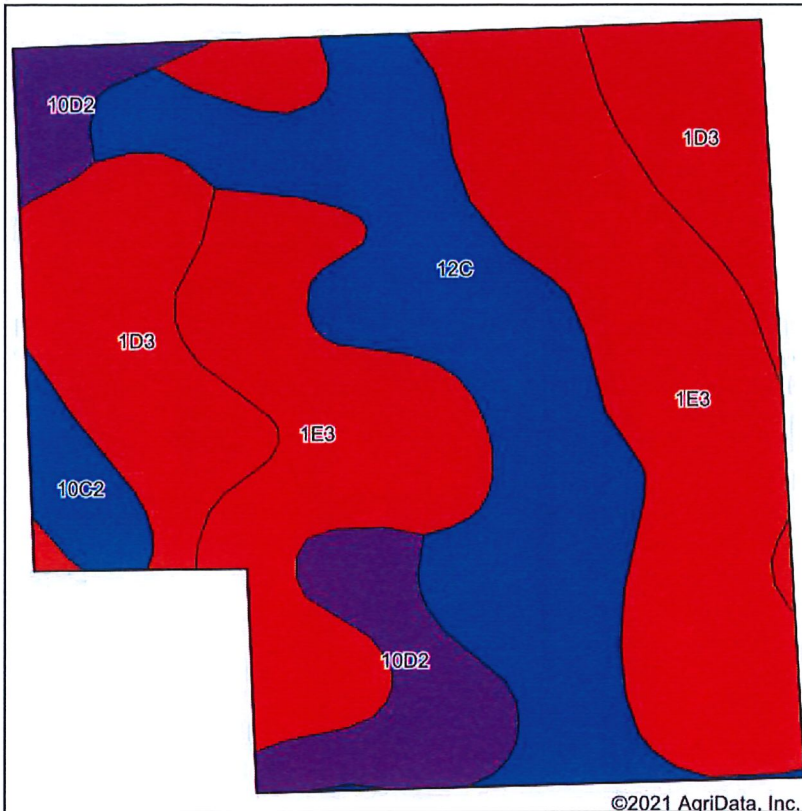


# Soils Map



State: **Iowa**  
 County: **Plymouth**  
 Location: **5-90N-47W**  
 Township: **Perry**  
 Acres: **35**  
 Date: **4/2/2021**








Maps Provided By:  
  
 CUSTOMIZED ONLINE MAPPING  
 © AgriData, Inc. 2021 [www.AgriDataInc.com](http://www.AgriDataInc.com)



Soils data provided by USDA and NRCS.

©2021 AgriData, Inc.

Area Symbol: IA149, Soil Area Version: 31

Code	Soil Description	Acres	Percent of field	CSR2 Legend	Non-Irr Class *c	CSR2**	CSR	*n NCCPI Soybeans
1E3	Ida silt loam, 14 to 20 percent slopes, severely eroded	14.82	42.3%		IVe	18	26	56
12C	Napier silt loam, 5 to 9 percent slopes	9.37	26.8%		IIIe	89	55	87
1D3	Ida silt loam, 9 to 14 percent slopes, severely eroded	6.42	18.3%		IIIe	32	35	61
10D2	Monona silt loam, 9 to 14 percent slopes, eroded	3.38	9.7%		IIIe	60	47	72
10C2	Monona silt loam, 5 to 9 percent slopes, eroded	1.01	2.9%		IIIe	86	55	78
<b>Weighted Average</b>						<b>45.6</b>	<b>38.3</b>	<b>*n 67.4</b>

\*\*IA has updated the CSR values for each county to CSR2.  
 \*n: The aggregation method is "Weighted Average using all components"  
 \*c: Using Capabilities Class Dominant Condition Aggregation Method

Soils data provided by USDA and NRCS.