

Iowa  
 Plymouth  
 Report ID: FSA-156EZ

U.S. Department of Agriculture  
 Farm Service Agency  
**Abbreviated 156 Farm Record**

**FARM: 9301**  
 Prepared: 9/17/21 10:22 AM  
 Crop Year: 2021  
 Page: 1 of 2

DISCLAIMER: This is data extracted from the web farm database. Because of potential messaging failures in MIDAS, this data is not guaranteed to be an accurate and complete representation of data contained in the MIDAS system, which is the system of record for Farm Records.

Operator Name \_\_\_\_\_ Farm Identifier \_\_\_\_\_ Recon Number 2019 - 18

Farms Associated with Operator:  
 None

ARC/PLC G//F Eligibility: Eligible

CRP Contract Number(s): None

Farmland	Cropland	DCP Cropland	WBP	WRP	EWP	CRP Cropland	GRP	Farm Status	Number of Tracts
237.43	223.23	223.23	0.0	0.0	0.0	0.0	0.0	Active	1
State Conservation	Other Conservation	Effective DCP Cropland	Double Cropped	MPL/FWP	Native Sod				
0.0	0.0	223.23	0.0	0.0	0.0				

ARC/PLC						
PLC	ARC-CO	ARC-IC	PLC-Default	ARC-CO-Default	ARC-IC-Default	
CORN	SOYBN	NONE	NONE	NONE	NONE	

Crop	Base Acreage	PLC Yield	CCC-505 CRP Reduction	HIP
CORN	112.5	176	0.00	
SOYBEANS	106.8	53	0.00	0
<b>Total Base Acres:</b>	<b>219.3</b>			

Tract Number: 2193 Description NW4,S2 NE4 SEC 2 REMSEN  
 FSA Physical Location : Plymouth, IA ANSI Physical Location: Plymouth, IA

BIA Range Unit Number:

HEL Status: NHEL: no agricultural commodity planted on undetermined fields

Wetland Status: Tract does not contain a wetland

WL Violations: None

Farmland	Cropland	DCP Cropland	WBP	WRP	EWP	CRP Cropland	GRP
237.43	223.23	223.23	0.0	0.0	0.0	0.0	0.0
State Conservation	Other Conservation	Effective DCP Cropland	Double Cropped	MPL/FWP	Native Sod		
0.0	0.0	223.23	0.0	0.0	0.0		
Crop	Base Acreage	PLC Yield	CCC-505 CRP Reduction				
CORN	112.5	176	0.00				
SOYBEANS	106.8	53	0.00				
<b>Total Base Acres:</b>	<b>219.3</b>						

Owners:

Iowa  
Plymouth

U.S. Department of Agriculture  
Farm Service Agency

**FARM: 9301**  
Prepared: 9/17/21 10:22 AM  
Crop Year: 2021  
Page: 2 of 2

Report ID: FSA-156EZ

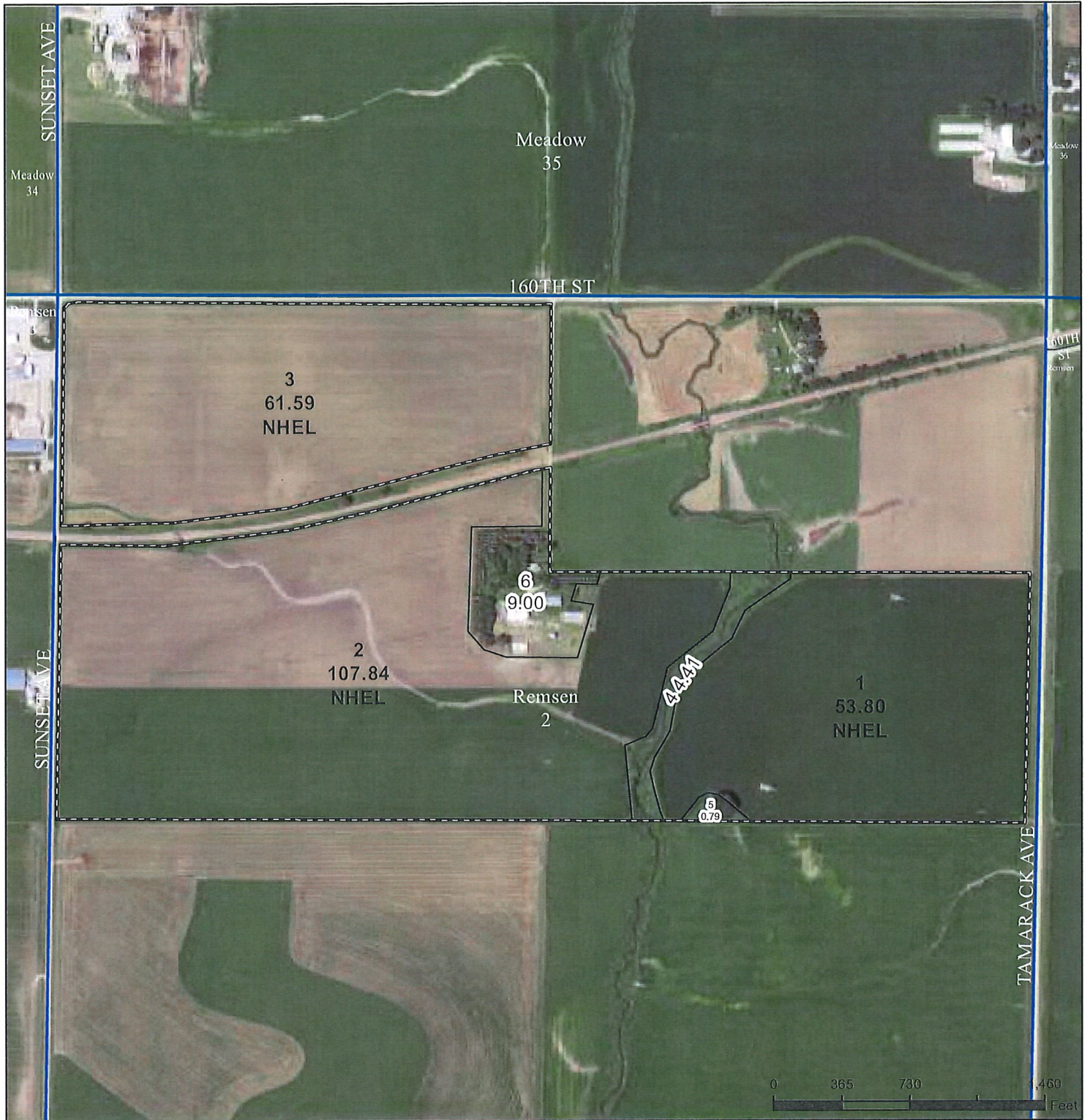
**Abbreviated 156 Farm Record**

DISCLAIMER: This is data extracted from the web farm database. Because of potential messaging failures in MIDAS, this data is not guaranteed to be an accurate and complete representation of data contained in the MIDAS system, which is the system of record for Farm Records.

---

Other Producers:

---



Legend

- Non-Cropland
- CRP
- Iowa PLSS
- Cropland
- Tract Boundary
- Iowa Roads

Wetland Determination Identifiers

- Restricted Use
- ▼ Limited Restrictions
- Exempt from Conservation
- Compliance Provisions

Tract Cropland Total: 223.23 acres

2021 Program Year

Map Created April 22, 2021

Farm 9301

Tract 2193

United States Department of Agriculture (USDA) Farm Service Agency (FSA) maps are for FSA Program administration only. This map does not represent a legal survey or reflect actual ownership; rather it depicts the information provided directly from the producer and/or National Agricultural Imagery Program (NAIP) imagery. The producer accepts the data 'as is' and assumes all risks associated with its use. USDA-FSA assumes no responsibility for actual or consequential damage incurred as a result of any user's reliance on this data outside FSA Programs. Wetland identifiers do not represent the size, shape, or specific determination of the area. Refer to your original determination (CPA-026 and attached maps) for exact boundaries and determinations or contact USDA Natural Resources Conservation Service (NRCS).

USDA is an equal opportunity provider, employer, and lender.