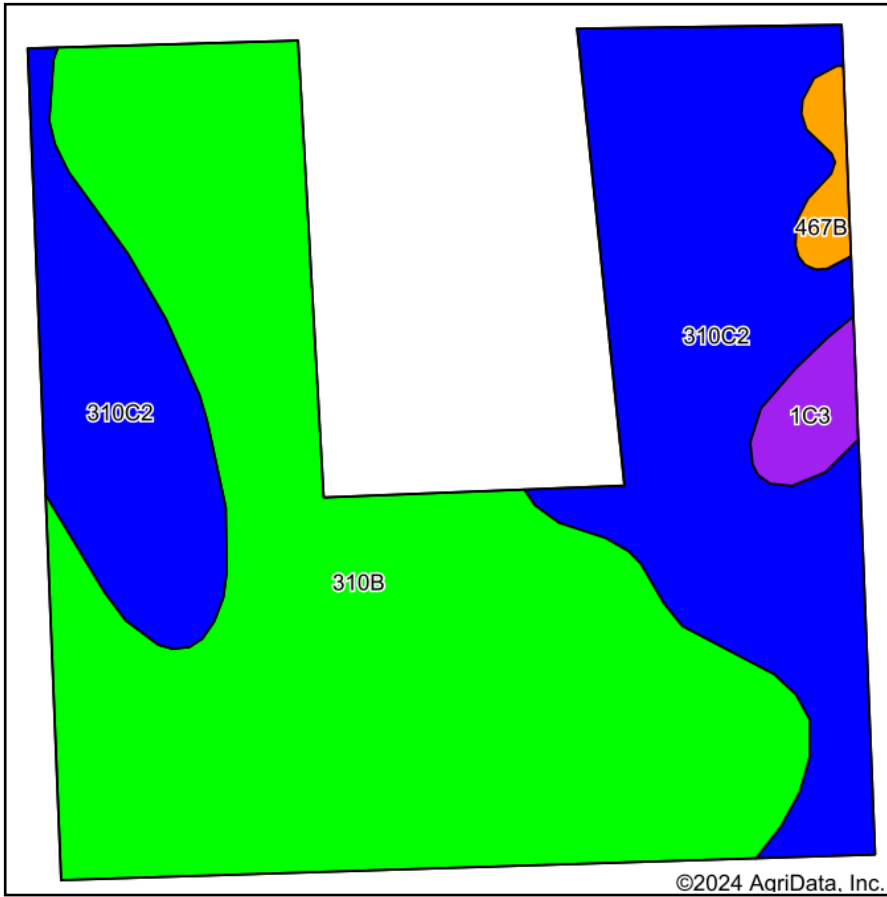
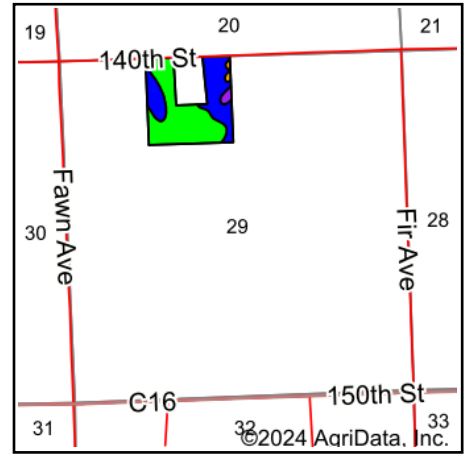


Soils Map



Soils data provided by USDA and NRCS.

©2024 AgriData, Inc.



State: **Iowa**
 County: **Plymouth**
 Location: **29-93N-47W**
 Township: **Preston**
 Acres: **31.78**
 Date: **2/14/2024**



Maps Provided By:



© AgriData, Inc. 2023

www.AgriDataInc.com



Area Symbol: IA149, Soil Area Version: 34

Code	Soil Description	Acres	Percent of field	CSR2 Legend	Non-Irr Class *c	CSR2**	CSR	*n NCCPI Soybeans	
310B	Galva silty clay loam, 2 to 5 percent slopes	18.21	57.3%		Ile	95	68	75	
310C2	Galva silty clay loam, 5 to 9 percent slopes, eroded	12.48	39.3%		IIle	84	51	65	
1C3	Ida silt loam, 5 to 9 percent slopes, severely eroded	0.67	2.1%		IIIle	58	44	61	
467B	Radford silty clay loam, 2 to 5 percent slopes	0.42	1.3%		IIw	75	72	77	
Weighted Average						2.41	89.6	60.9	*n 70.8

**IA has updated the CSR values for each county to CSR2.

*n: The aggregation method is "Weighted Average using all components"

**IA has updated the CSR values for each county to CSR2.*c: Using Capabilities Class Dominant Condition Aggregation Method