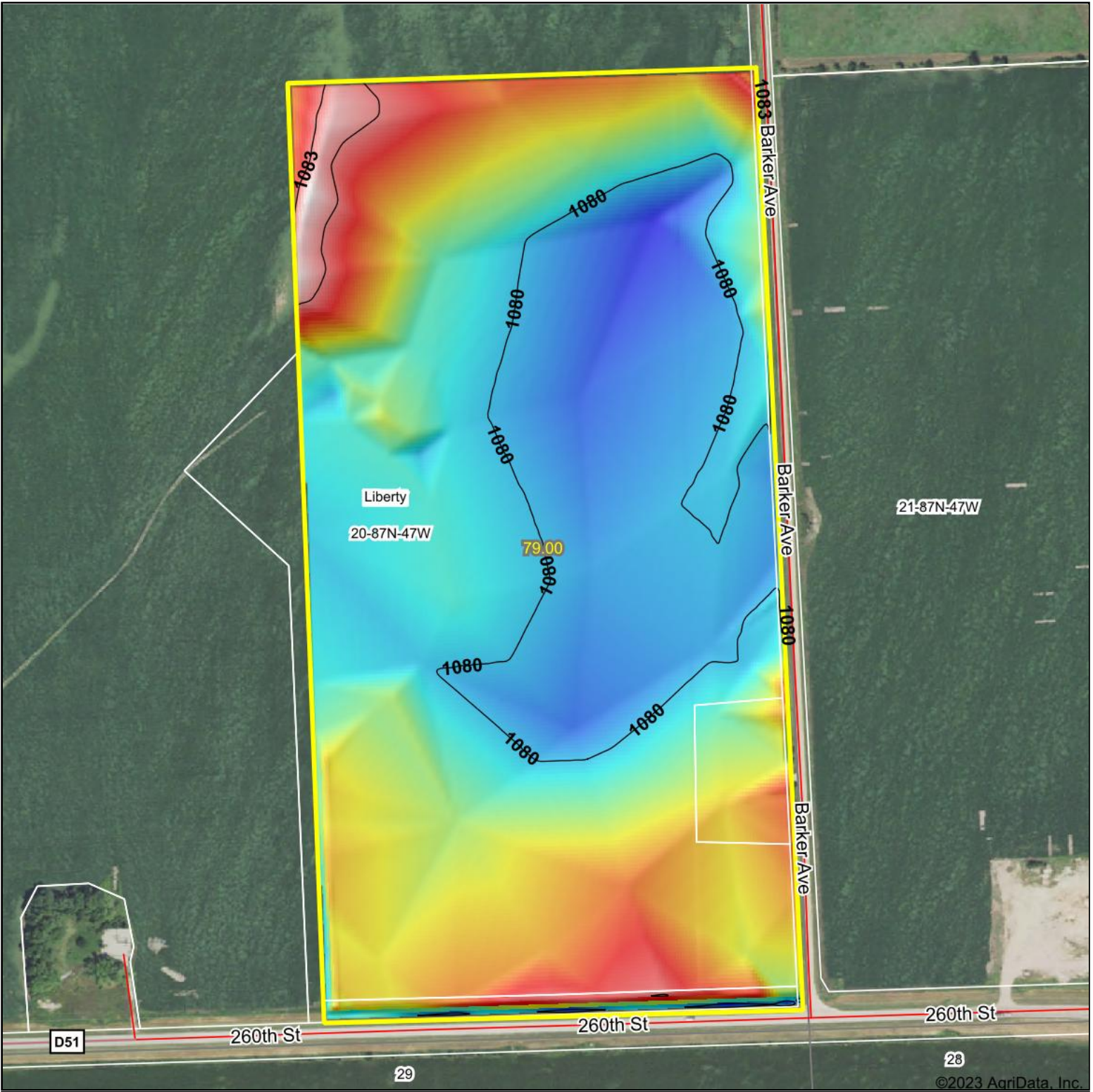


Topography Hillshade



<p>Low Elevation High</p>	<p>Source: USGS 3 meter dem Interval(ft): 3 Min: 1,079.1 Max: 1,083.7 Range: 4.6 Average: 1,080.7 Standard Deviation: 0.95 ft</p>	<p>0ft 431ft 863ft</p> <p>20-87N-47W Woodbury County Iowa</p> <p>4/28/2023 map center: 42° 20' 3.72, -96° 19' 50.33</p>
---------------------------	---	---



© AgriData, Inc. 2023 www.AgriDataInc.com
 Field borders provided by Farm Service Agency as of 5/21/2008