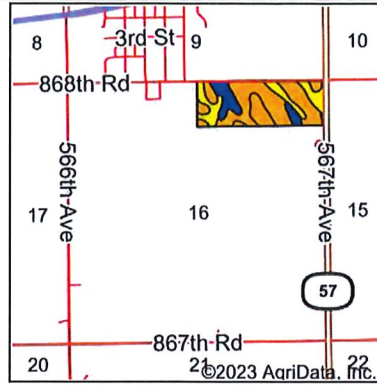


Soils Map

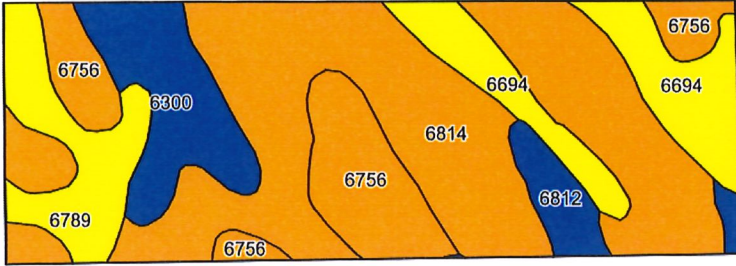


State: **Nebraska**
 County: **Cedar**
 Location: **16-28N-2E**
 Township: **Precinct 20**
 Acres: **55**
 Date: **1/3/2023**







Maps Provided By:

 CUSTOMIZED ONLINE MAPPING
 © AgriData, Inc. 2021 www.AgriDataInc.com



©2023 AgriData, Inc.

Soils data provided by USDA and NRCS.

Area Symbol: NE027, Soil Area Version: 22																	
Code	Soil Description	Acres	Percent of field	Non-Irr Class Legend	Non-Irr Class *c	Irr Class *c	SRPG	Alfalfa hay Tons	Alfalfa hay Irrigated Tons	Corn Bu	Corn Irrigated Bu	Oats Bu	Smooth bromegrass AUM	Smooth bromegrass Irrigated AUM	Soybeans Bu	Soybeans Irrigated Bu	*n NCCPI Soybeans
6814	Moody silty clay loam, 6 to 11 percent slopes, eroded	24.72	44.9%		IIIe	IVe	67										62
6756	Nora silt loam, 6 to 11 percent slopes, eroded	9.87	17.9%		IIIe	IVe	64										67
6694	Crofton-Nora complex, 6 to 11 percent slopes, eroded	7.22	13.1%		IVe	IVe	57										64
6300	Aowa silt loam, 0 to 3 percent slopes, occasionally flooded	5.68	10.3%		IIw	IIw	58	4	5	86	126	68	5	10	34	41	76

Soils data provided by USDA and NRCS.



Code	Soil Description	Acres	Percent of field	Non-Irr Class Legend	Non-Irr Class *c	Irr Class *c	SRPG	Alfalfa hay Tons	Alfalfa hay Irrigated Tons	Corn Bu	Corn Irrigated Bu	Oats Bu	Smooth bromegrass AUM	Smooth bromegrass Irrigated AUM	Soybeans Bu	Soybeans Irrigated Bu	*n NCCPI Soybeans
6789	Crofton-Nora complex, 11 to 17 percent slopes, eroded	5.18	9.4%		Ive		52										61
6812	Moody silty clay loam, 2 to 6 percent slopes, eroded	2.33	4.2%		Ile	IIle	71										64
Weighted Average					3.08	*-	63	0.4	0.5	8.9	13	7	0.5	1	3.5	4.2	*n 64.6

*n: The aggregation method is "Weighted Average using all components"

*c: Using Capabilities Class Dominant Condition Aggregation Method

*- Irr Class weighted average cannot be calculated on the current soils data due to missing data.