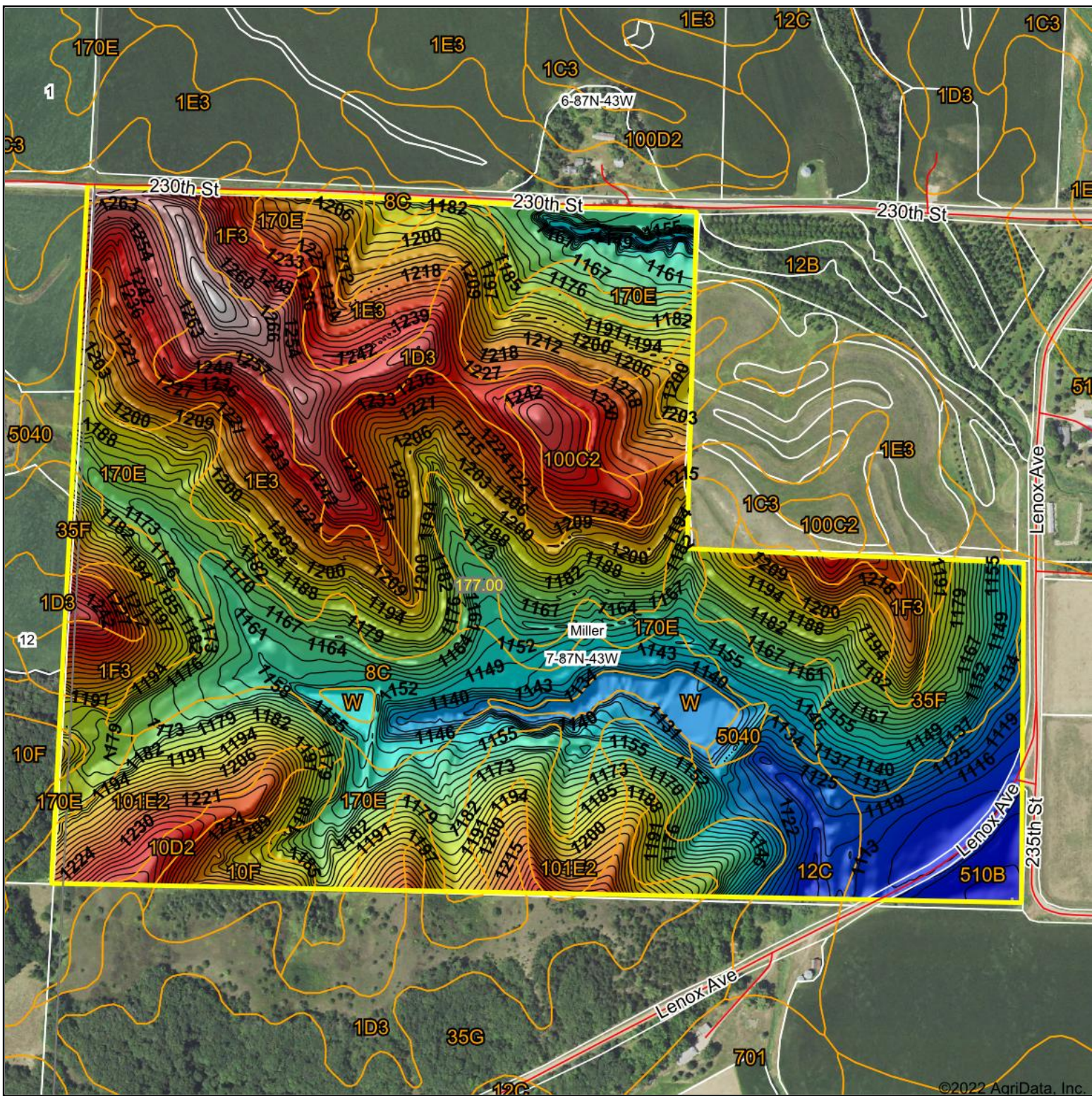
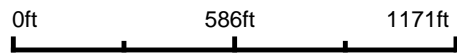


# Topography Hillshade



Source: USGS 3 meter dem



Interval(ft): 3

Min: 1,102.9

Max: 1,282.5

Range: 179.6

Average: 1,188.5

Standard Deviation: 38.65 ft



5/2/2022

**7-87N-43W**  
Woodbury County  
Iowa

map center: 42° 22' 5.91, -95° 53' 34.64



Maps Provided By:



© AgriData, Inc. 2021 www.AgriDataInc.com

Field borders provided by Farm Service Agency as of 5/21/2008.

©2022 AgriData, Inc.