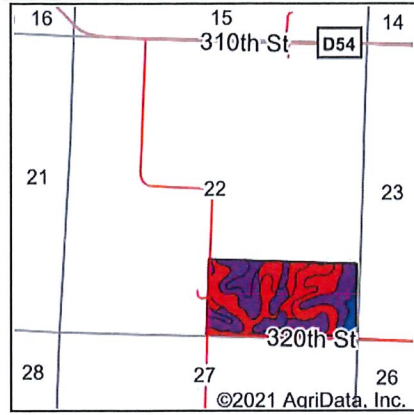
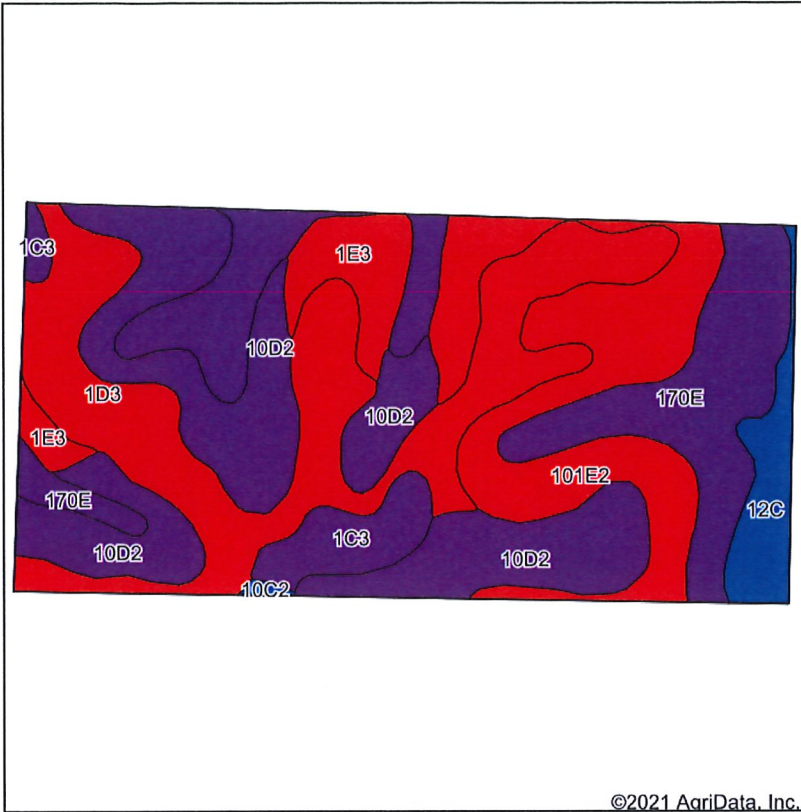


Soils Map



State: **Iowa**
 County: **Woodbury**
 Location: **22-86N-43W**
 Township: **Oto**
 Acres: **80**
 Date: **10/6/2021**



Maps Provided By:



Soils data provided by USDA and NRCS.

©2021 AgriData, Inc.

© AgriData, Inc. 2021

www.AgriDataInc.com

Area Symbol: IA193, Soil Area Version: 30									
Code	Soil Description	Acres	Percent of field	CSR2 Legend	Non-Irr Class *c	CSR2**	CSR	*n NCCPI Soybeans	
10D2	Monona silt loam, 9 to 14 percent slopes, eroded	20.23	25.3%		IIIe	60	47	72	
1D3	Ida silt loam, 9 to 14 percent slopes, severely eroded	19.85	24.8%		IIIe	32	37	61	
170E	Napier-Castana silt loams, 9 to 20 percent slopes	15.42	19.3%		IIIe	56	34	77	
101E2	Monona-Ida silt loams, 14 to 20 percent slopes, eroded	13.88	17.4%		IVe	40	35	63	
1E3	Ida silt loam, 14 to 20 percent slopes, severely eroded	4.00	5.0%		IVe	18	28	56	
1C3	Ida silt loam, 5 to 9 percent slopes, severely eroded	3.35	4.2%		IIIe	58	46	63	
12C	Napier silt loam, 5 to 9 percent slopes	3.11	3.9%		IIIe	89	58	87	
10C2	Monona silt loam, 5 to 9 percent slopes, eroded	0.16	0.2%		IIIe	86	57	78	
Weighted Average						3.22	47.8	39.4	*n 68.1

**IA has updated the CSR values for each county to CSR2.

*n: The aggregation method is "Weighted Average using all components"

*c: Using Capabilities Class Dominant Condition Aggregation Method

Soils data provided by USDA and NRCS.