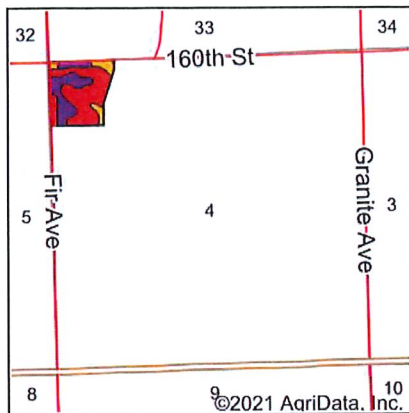
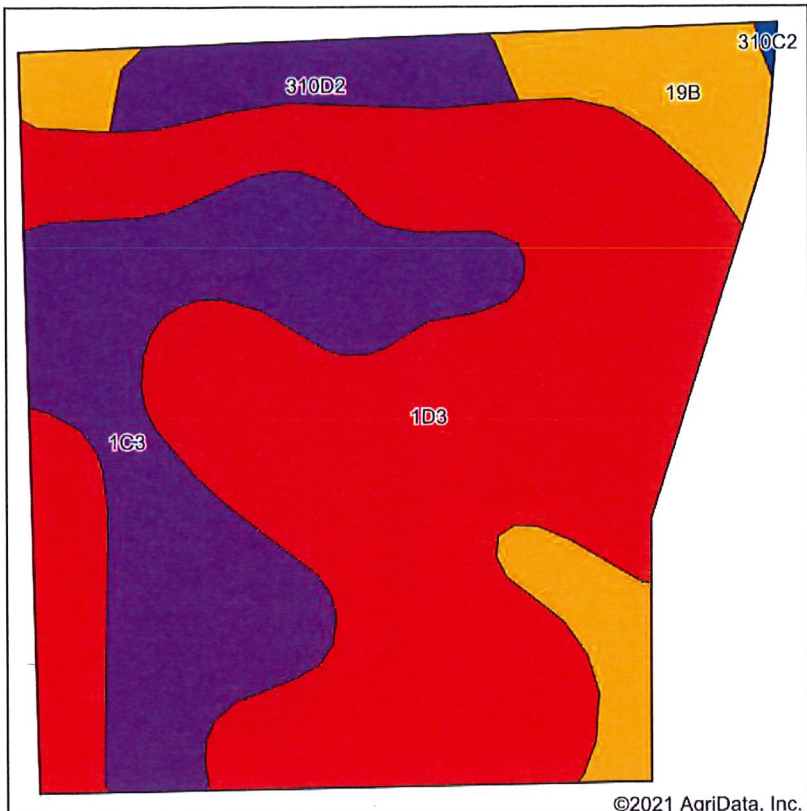


Soils Map



State: **Iowa**
 County: **Plymouth**
 Location: **4-92N-47W**
 Township: **Johnson**
 Acres: **23.88**
 Date: **5/26/2021**



Soils data provided by USDA and NRCS.

©2021 AgriData, Inc.

Area Symbol: IA149, Soil Area Version: 31

Code	Soil Description	Acres	Percent of field	CSR2 Legend	Non-Irr Class *c	CSR2**	CSR	*n NCCPI Soybeans
1D3	Ida silt loam, 9 to 14 percent slopes, severely eroded	14.13	59.2%	■	Ille	32	35	61
1C3	Ida silt loam, 5 to 9 percent slopes, severely eroded	5.78	24.2%	■	Ille	58	44	63
19B	Kennebec-McPaul silt loams, 2 to 5 percent slopes	2.68	11.2%	■	Ile	79	73	79
310D2	Galva silty clay loam, 9 to 14 percent slopes, eroded	1.29	5.4%	■	Ille	57	42	61
Weighted Average						44.9	41.8	*n 63.5

**IA has updated the CSR values for each county to CSR2.
 *n: The aggregation method is "Weighted Average using all components"
 *c: Using Capabilities Class Dominant Condition Aggregation Method

Soils data provided by USDA and NRCS.