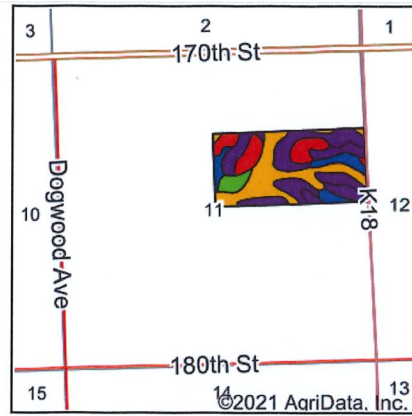
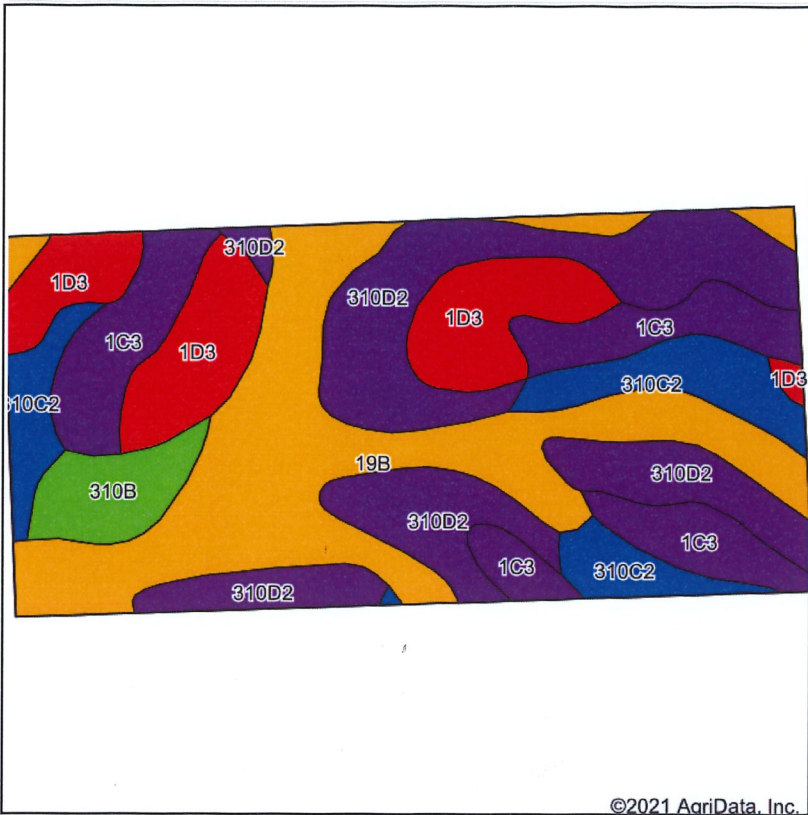


# Soils Map



State: **Iowa**  
 County: **Plymouth**  
 Location: **11-92N-48W**  
 Township: **Westfield**  
 Acres: **73.4**  
 Date: **2/22/2021**



Maps Provided By:



Soils data provided by USDA and NRCS.

©2021 AgriData, Inc.

Area Symbol: IA149, Soil Area Version: 31

Code	Soil Description	Acres	Percent of field	CSR2 Legend	Non-Irr Class *c	CSR2**	CSR	*n NCCPI Soybeans
19B	Kennebec-McPaul silt loams, 2 to 5 percent slopes	21.06	28.7%		Ile	79	73	79
310D2	Galva silty clay loam, 9 to 14 percent slopes, eroded	19.69	26.8%		IIIe	57	42	61
1C3	Ida silt loam, 5 to 9 percent slopes, severely eroded	11.01	15.0%		IIIe	58	44	63
1D3	Ida silt loam, 9 to 14 percent slopes, severely eroded	10.97	14.9%		IIIe	32	35	61
310C2	Galva silty clay loam, 5 to 9 percent slopes, eroded	7.54	10.3%		IIIe	84	51	66
310B	Galva silty clay loam, 2 to 5 percent slopes	3.13	4.3%		Ile	95	68	76
<b>Weighted Average</b>						<b>64.1</b>	<b>52.2</b>	<b>*n 67.6</b>

\*\*IA has updated the CSR values for each county to CSR2.

\*n: The aggregation method is "Weighted Average using all components"

\*c: Using Capabilities Class Dominant Condition Aggregation Method

Soils data provided by USDA and NRCS.