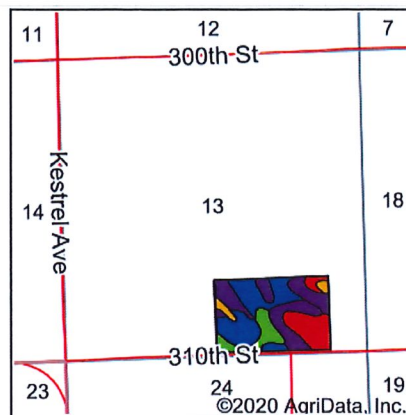
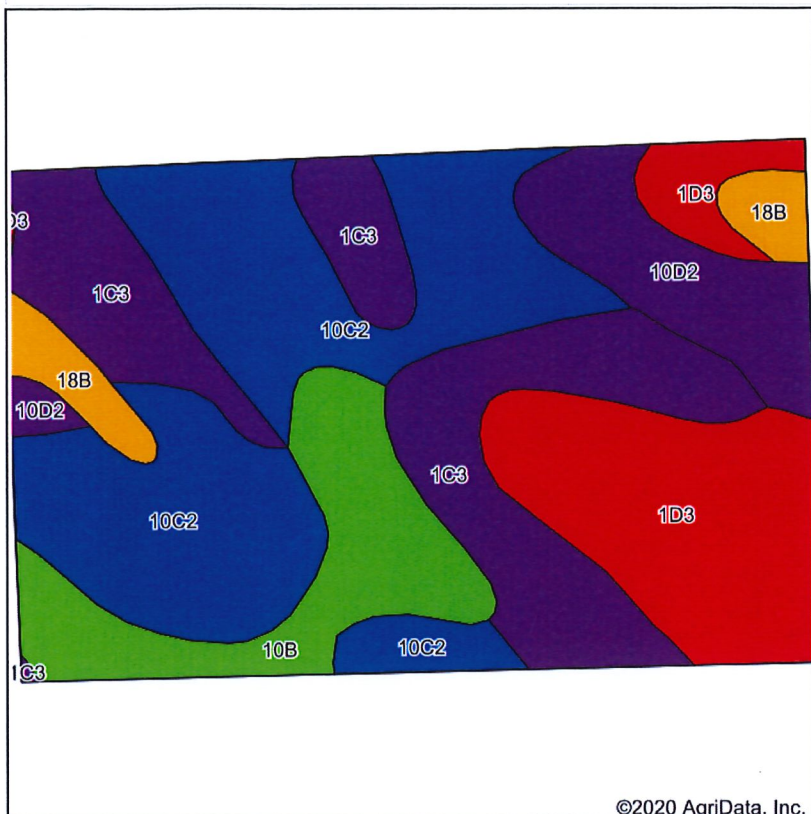


# Soils Map



State: **Iowa**  
 County: **Plymouth**  
 Location: **13-90N-46W**  
 Township: **Hungerford**  
 Acres: **58.26**  
 Date: **8/24/2020**



Maps Provided By:



Soils data provided by USDA and NRCS.

©2020 AgriData, Inc.

Area Symbol: IA149, Soil Area Version: 31

Code	Soil Description	Acres	Percent of field	CSR2 Legend	Non-Irr Class *c	Irr Class *c	CSR2**	CSR	Alfalfa hay	Caucasian bluestem	Common bermudagrass	Orchardgrass red clover	Tall fescue	Warm season grasses	*n NCCPI Soybeans
10C2	Monona silt loam, 5 to 9 percent slopes, eroded	18.99	32.6%		IIIe		86	55							78
1C3	Ida silt loam, 5 to 9 percent slopes, severely eroded	13.87	23.8%		IIIe		58	44							63
1D3	Ida silt loam, 9 to 14 percent slopes, severely eroded	10.73	18.4%		IIIe		32	35							61
10B	Monona silt loam, 2 to 5 percent slopes	7.16	12.3%		Ile	IIIe	95	73	7	8	7	7	7	8	90
10D2	Monona silt loam, 9 to 14 percent slopes, eroded	5.24	9.0%		IIIe		60	47							72

Soils data provided by USDA and NRCS.

Maps Provided By:



© AgriData, Inc. 2020 www.AgriDataInc.com

Code	Soil Description	Acres	Percent of field	CSR2 Legend	Non-Irr Class *c	Irr Class *c	CSR2**	CSR	Alfalfa hay	Caucasian bluestem	Common bermudagrass	Orchardgrass red clover	Tall fescue	Warm season grasses	*n NCCPI Soybeans
18B	McPaul-Kennebec silt loams, 2 to 5 percent slopes	2.27	3.9%		Ile		75	70							80
<b>Weighted Average</b>							<b>67.7</b>	<b>50.8</b>	<b>0.9</b>	<b>1</b>	<b>0.9</b>	<b>0.9</b>	<b>0.9</b>	<b>1</b>	<b>*n 72.3</b>

\*\*IA has updated the CSR values for each county to CSR2.

\*n: The aggregation method is "Weighted Average using all components"

\*c: Using Capabilities Class Dominant Condition Aggregation Method