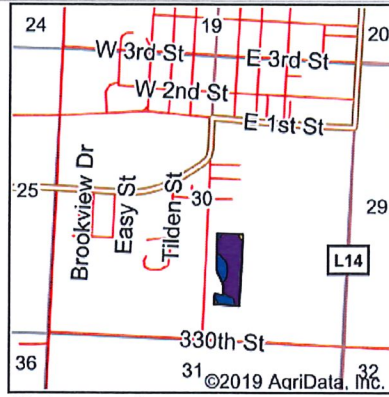


Soils Map



Soils data provided by USDA and NRCS.



State: **Iowa**
 County: **Plymouth**
 Location: **30-90N-43W**
 Township: **Garfield**
 Acres: **13.08**
 Date: **4/14/2020**



Maps Provided By:

© AgriData, Inc. 2019 www.AgriDataInc.com



| Area Symbol: IA149, Soil Area Version: 30 | | | | | | | | |
|---|---|-------|------------------|-------------|------------------|-------------|-------------|-------------------|
| Code | Soil Description | Acres | Percent of field | CSR2 Legend | Non-Irr Class *c | CSR2** | CSR | *n NCCPI Soybeans |
| 310D2 | Galva silty clay loam, 9 to 14 percent slopes, eroded | 9.51 | 72.7% | | IIIe | 57 | 42 | 56 |
| 310C2 | Galva silty clay loam, 5 to 9 percent slopes, eroded | 3.28 | 25.1% | | IIIe | 84 | 51 | 61 |
| 310B | Galva silty clay loam, 2 to 5 percent slopes | 0.15 | 1.1% | | Ile | 95 | 68 | 74 |
| 467B | Radford silty clay loam, 2 to 5 percent slopes | 0.14 | 1.1% | | Ile | 75 | 72 | 82 |
| Weighted Average | | | | | | 64.4 | 44.9 | *n 57.7 |

**IA has updated the CSR values for each county to CSR2.
 *n: The aggregation method is "Weighted Average using major components"
 *c: Using Capabilities Class Dominant Condition Aggregation Method

Soils data provided by USDA and NRCS.