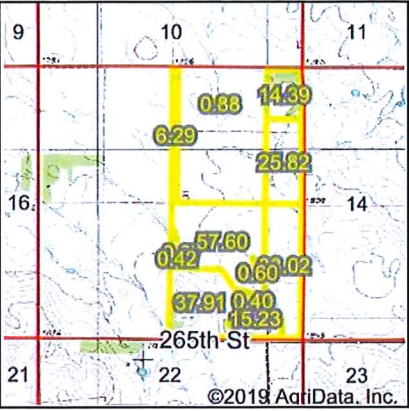
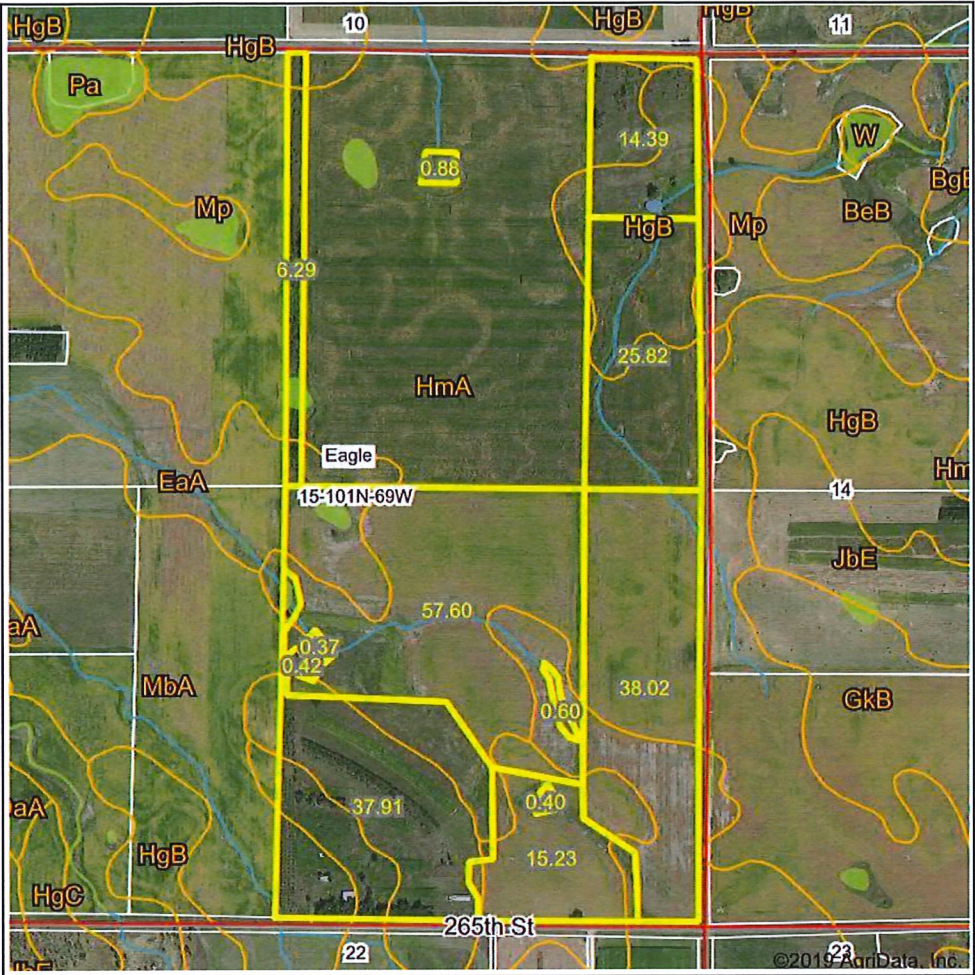


Wetlands Map

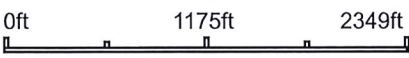
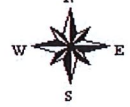


State: **South Dakota**
 Location: **15-101N-69W**
 County: **Brule**
 Township: **Eagle**
 Date: **12/26/2019**



Maps Provided By:

surety
 CUSTOMIZED ONLINE MAPPING
 © AgriData, Inc. 2019 www.AgriDataInc.com



Classification Code	Type	Acres
R4SBC	Riverine	2.03
PEM1A	Freshwater Emergent Wetland	1.09
PABFx	Freshwater Pond	0.68
PABFh	Freshwater Pond	0.18
PEM1F	Freshwater Emergent Wetland	0.18
R5UBH	Riverine	0.05
PEM1Cx	Freshwater Emergent Wetland	0.03
Total Acres		4.24

Data Source: National Wetlands Inventory website. U.S. DoI, Fish and Wildlife Service, Washington, D.C. <http://www.fws.gov/wetlands/>

Field borders provided by Farm Service Agency as of 5/21/2008.