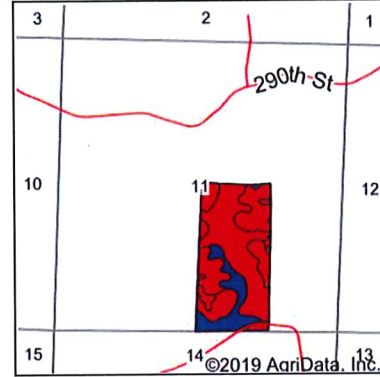
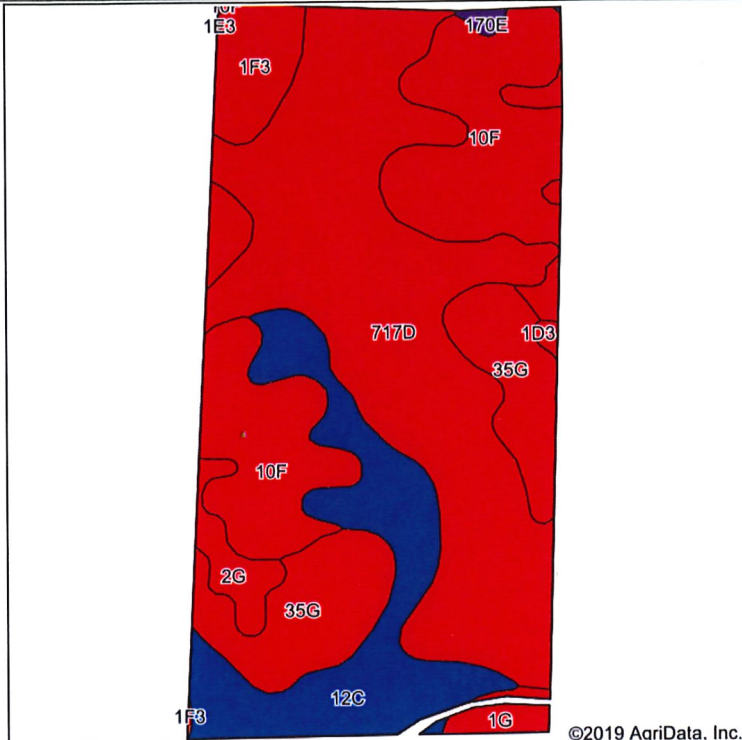


Soils Map



State: Iowa
 County: Woodbury
 Location: 11-86N-44W
 Township: Little Sioux
 Acres: 79.65
 Date: 5/1/2019



Maps Provided By:



Soils data provided by USDA and NRCS.

© AgriData, Inc. 2019 www.AgriDataInc.com

Area Symbol: IA193, Soil Area Version: 28

Code	Soil Description	Acres	Percent of field	CSR2 Legend	Non-Irr Class *c	Irr Class *c	CSR2**	CSR	*n NCCPI Soybeans	
717D	Napier-Gullied land complex, 5 to 14 percent slopes	31.59	39.7%		IIIe	IVe	42	5	5	
10F	Monona silt loam, 20 to 30 percent slopes	18.28	23.0%		VIe		26	22	12	
12C	Napier silt loam, 5 to 9 percent slopes	12.52	15.7%		IIIe		89	58	84	
35G	Liston-Burchard complex, 25 to 40 percent slopes	10.22	12.8%		VIIe		11	5	8	
1F3	Ida silt loam, 20 to 30 percent slopes, severely eroded	3.19	4.0%		VIe		8	9	7	
2G	Hamburg silt loam, 40 to 75 percent slopes	1.86	2.3%		VIIe		5	5	9	
1G	Ida silt loam, 30 to 40 percent slopes	1.00	1.3%		VIIe		6	5	12	
1D3	Ida silt loam, 9 to 14 percent slopes, severely eroded	0.71	0.9%		IIIe		32	37	47	
170E	Napier-Castana silt loams, 9 to 20 percent slopes	0.28	0.4%		IIIe		56	34	74	
Weighted Average								39	17.8	*n 20.3

**IA has updated the CSR values for each county to CSR2.

*n: The aggregation method is "Weighted Average using major components"

*c: Using Capabilities Class Dominant Condition Aggregation Method
 Soils data provided by USDA and NRCS.