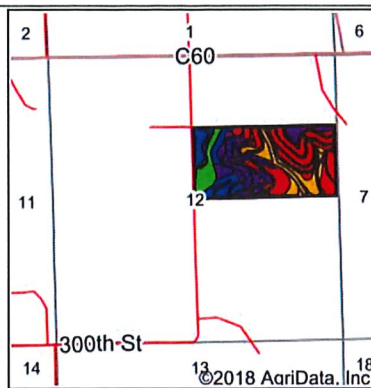
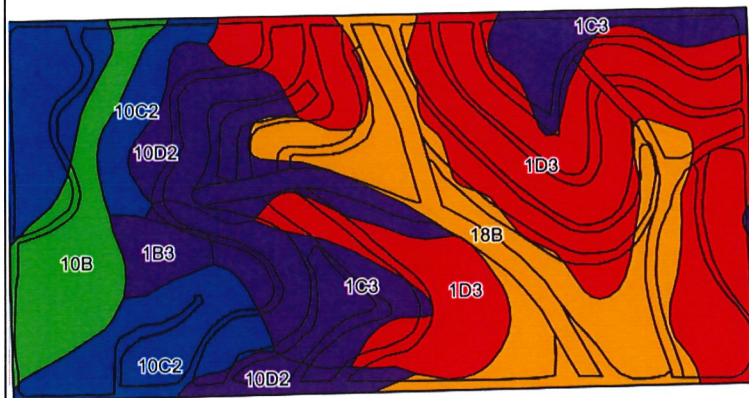


### Soils Map



State: **Iowa**  
 County: **Plymouth**  
 Location: **12-90N-47W**  
 Township: **Perry**  
 Acres: **77.9**  
 Date: **10/12/2018**



Soils data provided by USDA and NRCS.

©2018 AgriData, Inc.

Area Symbol: IA149, Soil Area Version: 28

Code	Soil Description	Acres	Percent of field	CSR2 Legend	Non-Irr Class *c	Irr Class *c	CSR2**	CSR	Alfalfa hay	Caucasian bluestem	Common bermudagrass	Orchardgrass red clover	Tall fescue	Warm season grasses	NCCPI Soybeans
1D3	Ida silt loam, 9 to 14 percent slopes, severely eroded	26.83	34.4%		IIIe		32	35							47
18B	McPaul-Kennebec silt loams, 2 to 5 percent slopes	14.34	18.4%		Ile		75	70							76
10C2	Monona silt loam, 5 to 9 percent slopes, eroded	11.89	15.3%		IIIe		86	55							71
1C3	Ida silt loam, 5 to 9 percent slopes, severely eroded	8.91	11.4%		IIIe		58	44							49
10D2	Monona silt loam, 9 to 14 percent slopes, eroded	8.46	10.9%		IIIe		60	47							67
10B	Monona silt loam, 2 to 5	5.95	7.6%		Ile	IIIe	95	73	7	8	7	7	7	8	88

	percent slopes													
1B3	Ida silt loam, 2 to 5 percent slopes, severely eroded	1.52	2.0%		lle	57	57							49
<b>Weighted Average</b>						<b>59.5</b>	<b>50.2</b>	<b>0.5</b>	<b>0.6</b>	<b>0.5</b>	<b>0.5</b>	<b>0.5</b>	<b>0.6</b>	<b>61.6</b>

\*\*IA has updated the CSR values for each county to CSR2.  
\*c: Using Capabilities Class Dominant Condition Aggregation Method

Soils data provided by USDA and NRCS.