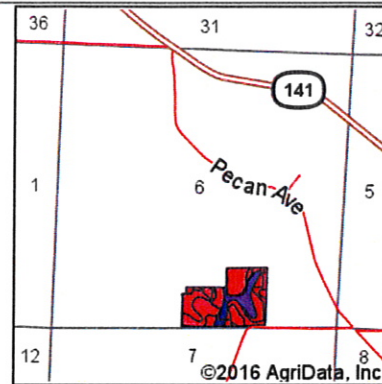
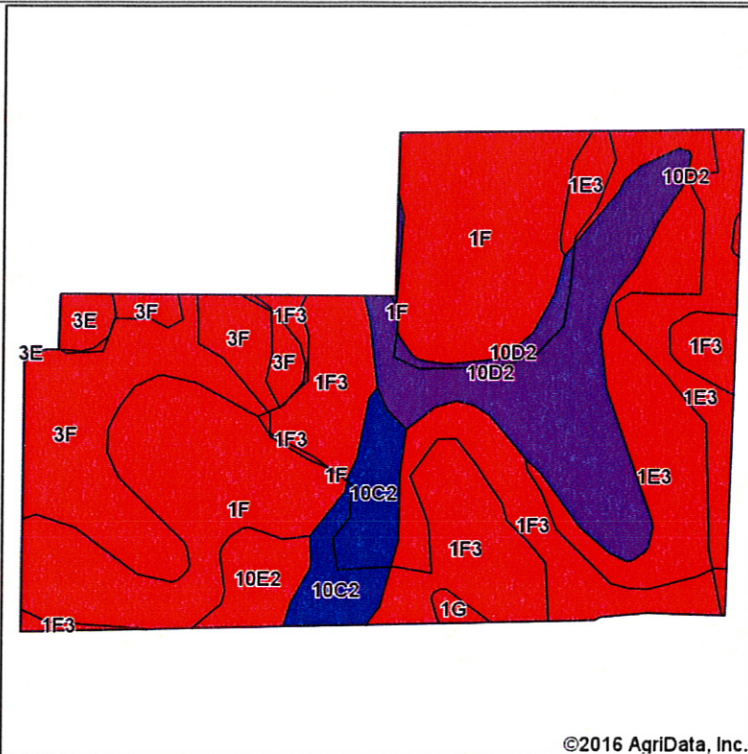


Soils Map



State: Iowa
 County: Monona
 Location: 6-85N-43W
 Township: Maple
 Acres: 30.41
 Date: 11/17/2016



Maps Provided By:



Soils data provided by USDA and NRCS.

Area Symbol: IA133, Soil Area Version: 26

Code	Soil Description	Acres	Percent of field	CSR2 Legend	Non-Irr Class *c	CSR2**	CSR	Alfalfa hay	Caucasian bluestem	Common bermudagrass	Orchardgrass red clover	Tall fescue	Warm season grasses
1F	Ida silt loam, 20 to 30 percent slopes	8.15	26.8%		Vle	7	15	1	1	1	1	1	1
1F3	Ida silt loam, 20 to 30 percent slopes, severely eroded	5.92	19.5%		Vle	8	10						
1E3	Ida silt loam, 14 to 20 percent slopes, severely eroded	5.14	16.9%		IVe	18	30						
10D2	Monona silt loam, 9 to 14 percent slopes, eroded	4.35	14.3%		IIIe	60	53						
3F	Castana silt loam, 20 to 30 percent slopes	4.07	13.4%		Vle	15	12						
10C2	Monona silt loam, 5 to 9 percent slopes, eroded	1.55	5.1%		IIIe	86	63						
10E2	Monona silt loam, 14 to 20 percent slopes, eroded	0.80	2.6%		IVe	45	43						
3E	Castana silt loam, 14 to 20 percent slopes	0.31	1.0%		IVe	38	32						
1G	Ida silt loam, 30 to 40 percent slopes	0.12	0.4%		VIIe	6	5						
<i>Weighted Average</i>						23	24.2	.03	.03	.03	.03	.03	.03