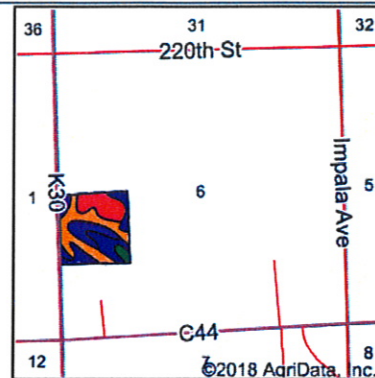
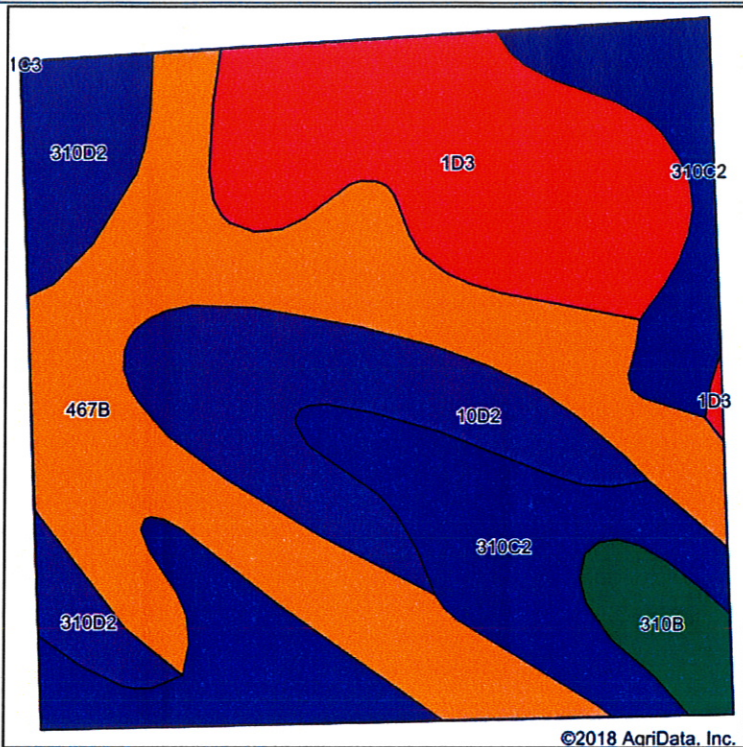


Soils Map



State: **Iowa**
 County: **Plymouth**
 Location: **6-91N-46W**
 Township: **Plymouth**
 Acres: **38.24**
 Date: **3/7/2018**



Soils data provided by USDA and NRCS.

©2018 AgriData, Inc.

Area Symbol: IA149, Soil Area Version: 28							
Code	Soil Description	Acres	Percent of field	CSR2 Legend	Non-Irr Class *c	CSR2**	CSR
467B	Radford silty clay loam, 2 to 5 percent slopes	12.09	31.6%		Ile	75	72
310C2	Galva silty clay loam, 5 to 9 percent slopes, eroded	9.64	25.2%		IIle	84	51
1D3	Ida silt loam, 9 to 14 percent slopes, severely eroded	7.57	19.8%		IIle	32	35
10D2	Monona silt loam, 9 to 14 percent slopes, eroded	4.93	12.9%		IIle	60	47
310D2	Galva silty clay loam, 9 to 14 percent slopes, eroded	2.67	7.0%		IIle	57	42
310B	Galva silty clay loam, 2 to 5 percent slopes	1.34	3.5%		Ile	95	68
Weighted Average						66.3	53.9

**IA has updated the CSR values for each county to CSR2.
 *c: Using Capabilities Class Dominant Condition Aggregation Method
 Soils data provided by USDA and NRCS.