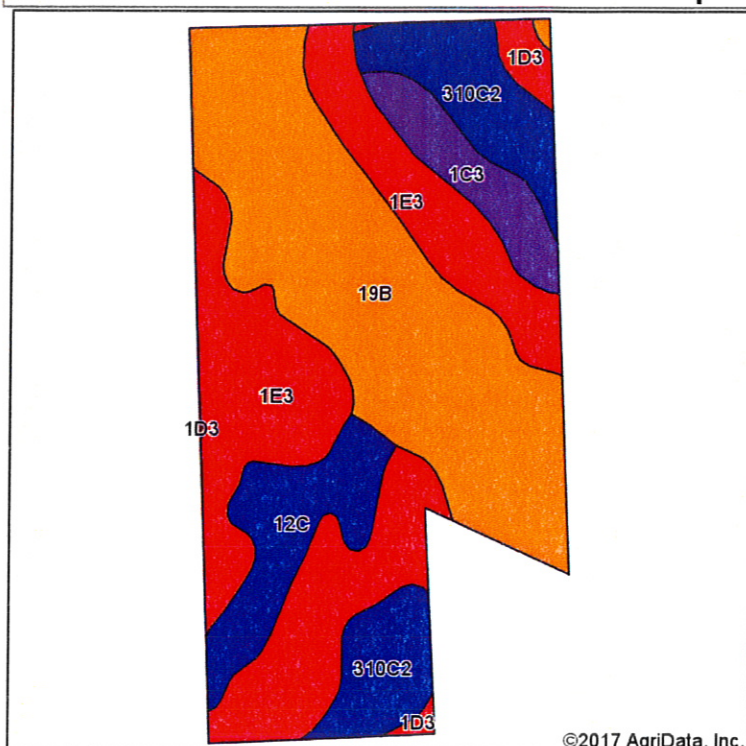
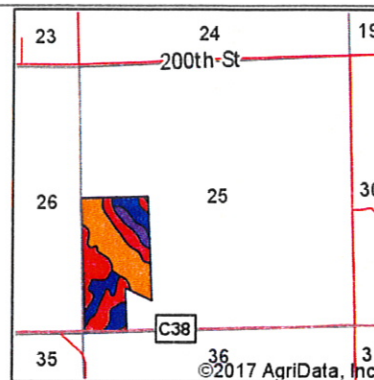


Soils Map



Soils data provided by USDA and NRCS.



State: **Iowa**
 County: **Plymouth**
 Location: **25-92N-49W**
 Township: **Westfield**
 Acres: **70.41**
 Date: **8/18/2017**



Maps Provided By:



surety
 CUSTOMIZED ONLINE MAPPING

© AgriData, Inc. 2017

www.AgriDataInc.com



Area Symbol: IA149, Soil Area Version: 26

Code	Soil Description	Acres	Percent of field	CSR2 Legend	Non-Irr Class *c	CSR2**	CSR
19B	Kennebec-McPaul silt loams, 2 to 5 percent slopes	25.73	36.5%		Ile	79	73
1E3	Ida silt loam, 14 to 20 percent slopes, severely eroded	24.38	34.6%		IVe	18	26
310C2	Galva silty clay loam, 5 to 9 percent slopes, eroded	8.95	12.7%		IIle	84	51
12C	Napier silt loam, 5 to 9 percent slopes	6.11	8.7%		IIle	89	55
1C3	Ida silt loam, 5 to 9 percent slopes, severely eroded	3.93	5.6%		IIle	58	44
1D3	Ida silt loam, 9 to 14 percent slopes, severely eroded	1.31	1.9%		IIle	32	35
Weighted Average						57.3	50

**IA has updated the CSR values for each county to CSR2.

*c: Using Capabilities Class Dominant Condition Aggregation Method

Soils data provided by USDA and NRCS.